

«UzAuto Motors» AJ  
**TEXNIK TOPSHIRIQ**



22TT-9036-00170

2022-09-28

TEXNIK TOPSHIRIQ TT

Butlovchi qism nomi	-94586674-STOPPER,RR DR WDW GLS RR -94585747-KNOB,CONTROL LEVER
Texnik ko`rsatkichlari	<b>Material:</b> <b>94586674 - PVC</b> <b>Eslatma: Bo`yalmagan materialdan foydalanish kerak.</b> <b>Butlovchi qism o`lchamlari va qo`shimcha ma`lumotlar chizmada ko`rsatilgan.</b> <b>94585747- PVC</b>

Butlovchi  
qismga  
texnika-  
texnologik  
talablar

### **Mahsulotni qabul qilish**

Mahsulotni sifati bo'yicha qabul qilish buyurtmachining "Butlovchi qismlarni kiritish nazorati" standartiga asosan amalga oshiriladi.

Mahsulotni miqdor va sifat bo'yicha qabul qilish buyurtmachining korxonasida ta'minotchining vakili ishtirokida amalga oshiriladi.

Yetkazib berilgan mahsulot miqdori buyurtmachi tomonidan taqdim etilgan talabnomaga binoan, yozma yoki elektron shaklda kelishilgan shaklda berilgan hajmlarga mos kelishi lozim.

### **Mahsulot sifati**

Ta'minotchi buyurtmachiga mahsulotni buyurtmachi tomonidan joriy etilgan me'yor va o'rnatilgan standart, mahsulotni sifatini, chizmalar talablari, me'yoriy xujjatlar, nazorat qilish usullari asosida yetkazib berilishiga kafolat beradi.

Mahsulot materialini, tuzilishini yoki hujjatlarni bir tomonlama o'zgartirilishga yo'l qo'yilmaydi.

Buyurtmachi mahsulot sifatini va ta'minotchining ekologik sertifikatini mavjudligini tekshirish huquqiga ega va zarur hollarda bu tekshirish huquqi bevosita iste'molchiga ham berilishi mumkin.

### **Sifat kafolati.**

Agar mahsulot kam yetkazib berilishi va sifat nomuvofiqligi, qadoqsiz va o'ramasiz yoki talab darajasida bo'lmagan qadoqda va o'ramada kelganligi, markasiz yoki talab darajada markalanmaganligi ta'minotchi vakili ishtirokida aniqlansa, ta'minotchi 3 (uch) ish kunida ushbu kamchiliklarni bartaraf etishi va yetishmayotgan miqdorini o'z mablag'lari xisobidan to'ldirilishi lozim, shuningdek buyurtmachidan yozma xabar(pochta, faks, elektron pochta) qabul qilinganidan keyin yoki yetkazib berilgan sanadan boshlab 1 (bir) ish kuni ichida tegishli idishga qadoqlash, markalash ishlarini bajarishi kerak.

Butlovchi qismning ishlatilish joyi	Yig`uv tsexida ishlatiladi
Narx qismi	Tender taklifida ko`rsatilgan narxlar eng past narxdan oshmasligi kerak va keyinchalik o`zgartirilishi mumkin emas. Taqdim qilingan narxlar O`zbekiston Respublikasi milliy valyutasi so`mda va qo`shimcha qiymat solig`i (QQS) bilan ko`rsatilishi lozim.
Fotosurat	Ilovada ko'rsatilgan.
Chizmasi va umumiy talablar	Ilovada ko'rsatilgan.
Qo`shimcha talablar	<p style="text-align: center;"><b>Tara va Qadoqlash</b></p> <p>Butlovchi qismni yetkazib berishda shakli va hajmi ta`minotchi tomonidan ishlab chiqilgan va buyurtmachi bilan kelishilgan maxsus idishlar ishlatiladi va buyurtmachi bilan kelishilgan talablarga ko`ra markalanishi lozim.</p> <p>Mahsulotni yetkazib berishda quyidagi ma`lumotlarni o`z ichiga olgan yorliq yopishtiriladi.</p> <ul style="list-style-type: none"> <li>– avtomobil turi; <ul style="list-style-type: none"> <li>– butlovchi qism nomi, raqami va soni;</li> </ul> </li> <li>– ta`minotchining kodi;</li> <li>– yetkazib berish joyi;</li> <li>– idish hajmi, qadoqlash sanasi, nazorat xolati va boshqalar.</li> </ul>

**Tasdiq**

**Boshqaruvchi direktor**



2022-09-28 08:29

**S. M. Jumaniyazov**

2022-09-27 16:53

**Rozilik**

**Boshqarma boshlig'i**

*Global xarid qilish va ta'minot tizimi boshqarmasi*



2022-09-27 16:53

**U. P. Ruzibayev**

2022-09-27 16:24

**Bo'lim boshlig'i**  
*Maxallillashtirish bo'limi*



2022-09-27 16:48

**D. K. Annaqov**  
2022-09-27 16:24

**Bo'linma boshlig'i**  
*HVAC, shassi va uzellar bo'linmasi*



2022-09-27 16:25

**E. I. Qilichov**  
2022-09-27 16:24

**Mas'ul**

---

**Muhandis-texnolog**  
*HVAC, shassi va uzellar bo'linmasi*



2022-09-27 16:24

**B. A. Raximbayev**  
2022-09-27 16:24



65

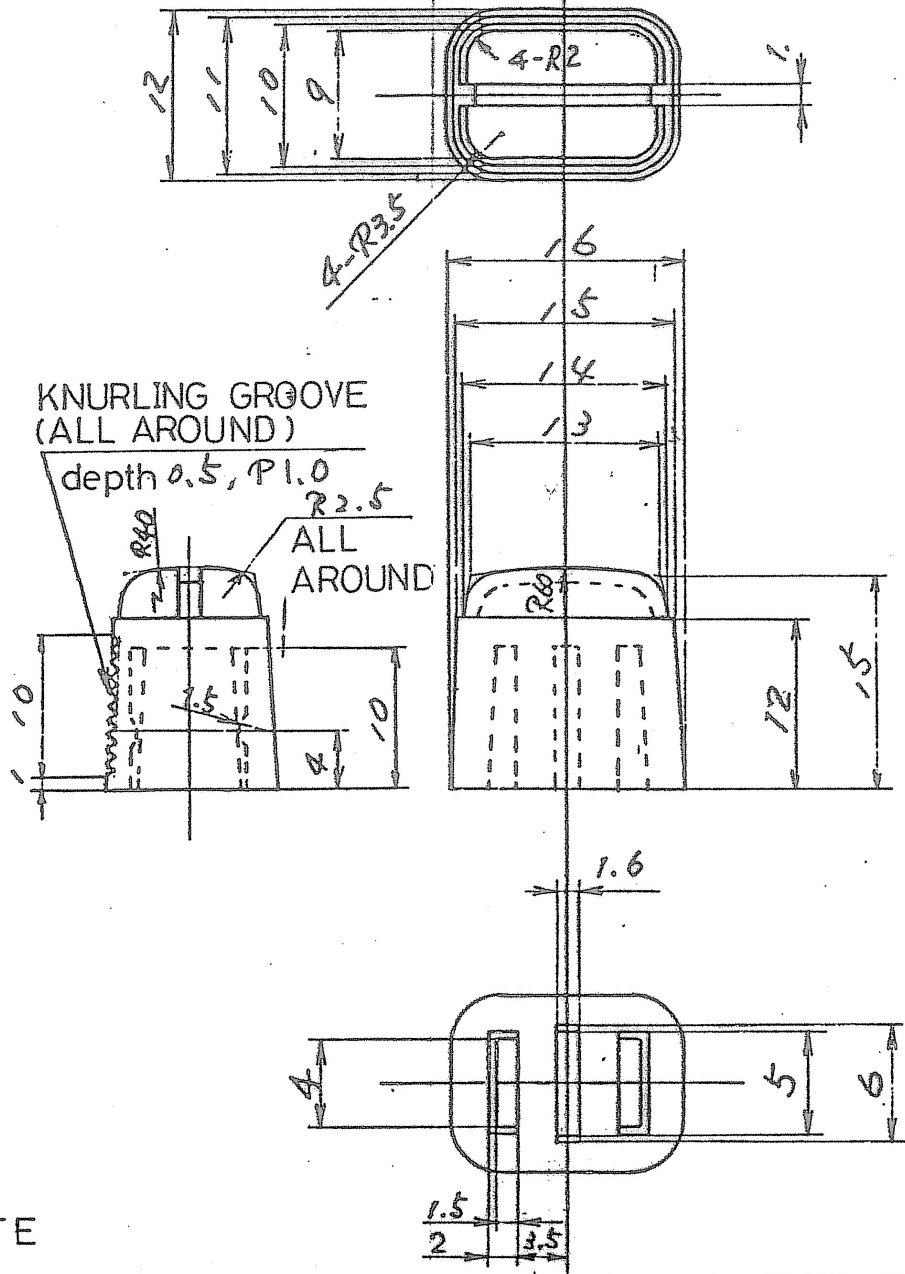
GM Korea

STOPPER,RR DR  
WDW GLS RR

подка  
стен  
задней дри

**94586674**





NOTE  $\Delta$   
 - RESTRICTED AND PROPRIETARY SUBSTANCES  
 FOR PIND  
 - 부품의 구성 정보는 GWT 00590에 따라  
 감지 또는 신고해야 한다.

NOTE  
 1. THE DETAIL SHALL BE DETERMINED BY MUTUAL CONSENT.

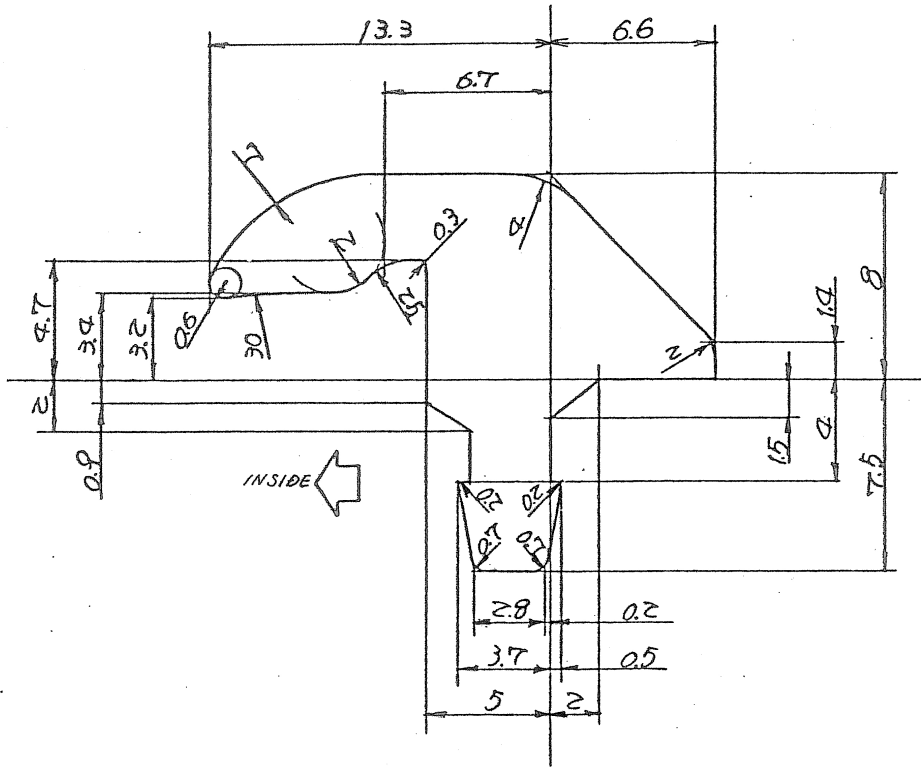
$\Delta$							
$\Delta$							
$\Delta$	1	PCT001801	31. AU. 07	ADDED NOTE		박영진	C.S.LEE
$\Delta$	1	TT2-00020	10. FE. 02	WAS PIND. 74431-85000		Y.S.WON	<i>[Signature]</i>
$\Delta$	-	WT2-0281	92. 12. 10.	REDRAWN		I.K.KIM	
REV	Q'TY	ECN. NO.	DATE	CONTENTS		RVD'BY	CHKD'BY APPVD BY

PART NUMBER 94585747 $\Delta$ <del>74431-85000</del>		PART NAME KNOB, CONTROL LEVER		GEN. TOL. DESD2101a EDS-A-1101
--	--	----------------------------------	--	--------------------------------------

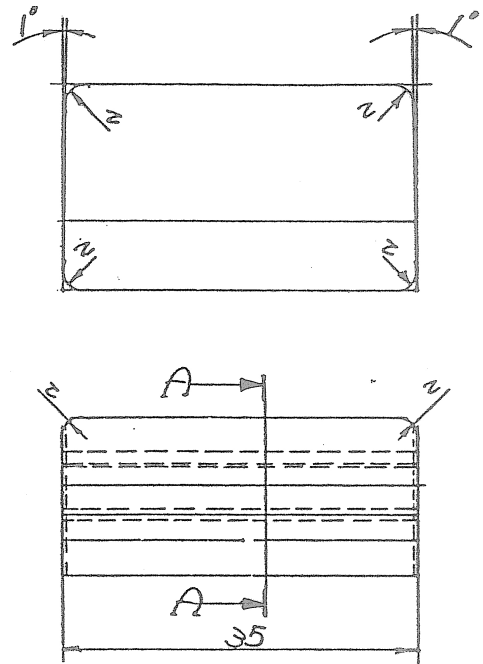
REF. DWG	SURFACE FINISHING	DSND BY I.	CHKD BY K. KIM	APPVD BY <i>[Signature]</i>	APPVD BY <i>[Signature]</i>
MATERIAL PVC		DATE 1992. 11. 7.		WT: 3 gr	SZ: 4

HEAT TREATMENT	SCALE 2:1	PAGE 1/1	대우조선공업주식회사 DAEWOO SHIPBUILDING & HEAVY MACHINERY Ltd.	
기준: Y7T.11	BLK: CS170			

THIRD ANGLE PROJECTION  
DO NOT SCALE DRAWING



SECTION AA (5/1)



NOTES

1. USE NONSTAINING MATERIAL.

주 기  
1. 비오염성 재료를 사용함.



NOTE  
RESTRICTED AND REPORTABLE SUBSTANCES  
FOR PARTS PER GMW3059.  
제품의 구성 성분은 GMW 3059에 따라  
표지 또는 신고되어야 한다.

REDESIGNED ACC. TO  
TT2 - 0293

PART NUMBER 94 586 674 <del>81344-80000</del> ⚠		PART NAME STOPPER, RR DR WINDOW GLASS, RR		GEN. TOL EDS A 1101 DSCD 2101a
REF. DWG	SURFACE FINISHING	DSND BY	CHKD BY	APPVD BY
MATERIAL PVC 10° ± 5° BLACK		전종환	the	Get
HEAT TREATMENT	SCALE	DATE 1992 . 11 . 30	WT. 1.3	SZ. 3
	PAGE 1/1	대우조선공업주식회사 DAEWOO SHIPBUILDING & HEAVY MACHINERY Ltd.		

ITEM	PART NO.	PART NAME	Q'TY	MATERIAL	REMARKS
				기종: YHT11	BLK: CS420

REV.	QTY	ECN. NO.	DATE	CONTENTS	APPROVED BY
1				REDESIGNED ACC. TO TT2 - 0293	CS
1				REDESIGNED ACC. TO TT2 - 0293	YM
					CS