

**«UzAuto Motors» AJ**  
**TEXNIK TOPSHIRIQ**



22TT-9029-00046

2022-03-25

TEXNIK TOPSHIRIQ TT

Butlovchi qism nomi	-94515258-NUT,LICENSE LAMP -94515285-NUT -94515286-NUT,BACK DOOR LAMP COVER -94515459-NUT-FRONT MUD FLAP
Texnik ko`rsatkichlari	-94515258-NUT,LICENSE LAMP NYLON 6 -94515285-NUT NYLON 6 -94515286-NUT,BACK DOOR LAMP COVER PA-6 -94515459-NUT-FRONT MUD FLAP PA6 (EDS-M-5101-21)

<p>Butlovchi qismga texnika-texnologik talablar</p>	<p style="text-align: center;"><b>Mahsulotni qabul qilish</b></p> <p>Mahsulotni sifati bo'yicha qabul qilish buyurtmachining "Butlovchi qismlarni kiritish nazorati" standartiga asosan amalga oshiriladi.</p> <p>Mahsulotni miqdor va sifat bo'yicha qabul qilish buyurtmachining korxonasida ta'minotchining vakili ishtirokida amalga oshiriladi.</p> <p>Yetkazib berilgan mahsulot miqdori buyurtmachi tomonidan taqdim etilgan talabnomaga binoan, yozma yoki elektron shaklda kelishilgan shaklda berilgan hajmlarga mos kelishi lozim.</p> <p style="text-align: center;"><b>Mahsulot sifati</b></p> <p>Ta'minotchi buyurtmachiga mahsulotni buyurtmachi tomonidan joriy etilgan me'yor va o'rnatilgan standart, mahsulotni sifatini, chizmalar talablari, me'yoriy xujjatlar, nazorat qilish usullari asosida yetkazib berilishiga kafolat beradi.</p> <p>Mahsulot materialini, tuzilishini yoki hujjatlarni bir tomonlama o'zgartirilishga yo'l qo'yilmaydi.</p> <p>Buyurtmachi mahsulot sifatini va ta'minotchining ekologik sertifikatini mavjudligini tekshirish huquqiga ega va zarur hollarda bu tekshirish huquqi bevosita iste'molchiga ham berilishi mumkin.</p> <p style="text-align: center;"><b>Sifat kafolati.</b></p> <p>Agar mahsulot kam yetkazib berilishi va sifat nomuvofiqligi, qadoqsiz va o'ramasiz yoki talab darajasida bo'lmagan qadoqda va o'ramada kelganligi, markasiz yoki talab darajada markalanmaganligi ta'minotchi vakili ishtirokida aniqlansa, ta'minotchi 3 (uch) ish kunida ushbu kamchiliklarni bartaraf etishi va yetishmayotgan miqdorini o'z mablag'lari xisobidan to'ldirilishi lozim, shuningdek buyurtmachidan yozma xabar(pochta, faks, elektron pochta) qabul qilinganidan keyin yoki yetkazib berilgan sanadan boshlab 1 (bir) ish kuni ichida tegishli idishga qadoqlash, markalash ishlarini bajarishi kerak.</p>
<p>Butlovchi qismning ishlatilish joyi</p>	<p>----- tsexida ishlatiladi</p>

Narx qismi	Tender taklifida ko`rsatilgan narxlar eng past narxdan oshmasligi kerak va keyinchalik o`zgartirilishi mumkin emas. Taqdim qilingan narxlar O`zbekiston Respublikasi milliy valyutasi so`mda va qo`shimcha qiymat solig`i (QQS) bilan ko`rsatilishi lozim.
Fotosurat	Ilovada ko'rsatilgan.
Chizmasi va umumiy talablar	Ilovada ko'rsatilgan.

<p>Qo`shimcha talablar</p>	<p style="text-align: center;"><b>Tara va Qadoqalash</b></p> <p>Butlovchi qismni yetkazib berishda shakli va hajmi ta`minotchi tomonidan ishlab chiqilgan va buyurtmachi bilan kelishilgan maxsus idishlar ishlatiladi va buyurtmachi bilan kelishilgan talablarga ko`ra markalanishi lozim.</p> <p>Mahsulotni yetkazib berishda quyidagi ma`lumotlarni o`z ichiga olgan yorliq yopishtiriladi.</p> <ul style="list-style-type: none"> <li>– avtomobil turi;</li> <li>– butlovchi qism nomi, raqami va soni;</li> <li>– ta`minotchining kodi;</li> <li>– yetkazib berish joyi;</li> <li>– idish hajmi, qadoqlash sanasi, nazorat xolati va boshqalar.</li> </ul> <p>Butlovchi qismni yetkazib berishda shakli va hajmi ta`minotchi tomonidan ishlab chiqilgan va buyurtmachi bilan kelishilgan maxsus idishlar ishlatiladi va buyurtmachi bilan kelishilgan talablarga ko`ra markalanishi lozim.</p> <p>Mahsulotni yetkazib berishda quyidagi ma`lumotlarni o`z ichiga olgan yorliq yopishtiriladi.</p> <ul style="list-style-type: none"> <li>– avtomobil turi;</li> <li>– butlovchi qism nomi, raqami va soni;</li> <li>– ta`minotchining kodi;</li> <li>– yetkazib berish joyi;</li> <li>– idish hajmi, qadoqlash sanasi, nazorat xolati va boshqalar.</li> </ul>
----------------------------	--

**Tasdiq**

**Boshqaruvchi direktor**



2022-03-25 11:58

**S. M.  
Jumaniyazov**  
2022-03-25 10:05

**Rozilik**

---

**Boshqarma boshlig'i**

*Global xarid qilish va ta'minot tizimi  
boshqarmasi*



2022-03-25 10:05

**U. P. Ruzibayev**

2022-03-24 12:20

**Bo'lim boshlig'i**

*Global xarid bo'limi*



2022-03-25 09:48

**D. K. Annaqov**

2022-03-24 12:20

**Bo'linma boshlig'i**

*HVAC, shassi va uzellar bo'linmasi*



2022-03-25 09:16

**E. I. Qilichov**

2022-03-24 12:20

**Mas'ul**

---

**2 toifali muhandis-texnolog**

*HVAC, shassi va uzellar bo'linmasi*

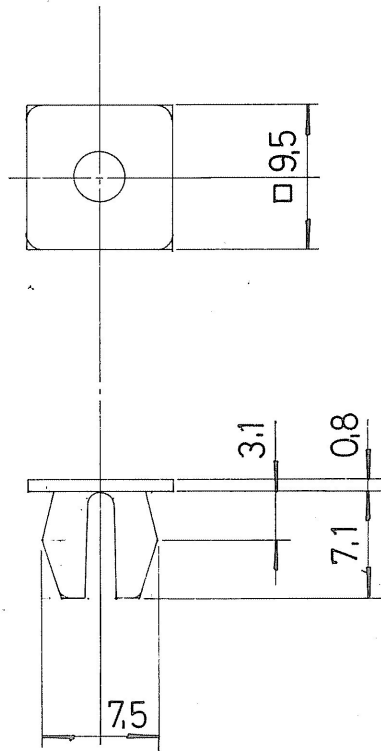


2022-03-24 12:20

**O. J. Masharipov**

2022-03-24 12:20

APPLICABLE SCREW:M4  
 MATCH'G PLATE THICKNESS : 0,8~2,3  
 MATCH'G HOLE :  $\square 6,7$

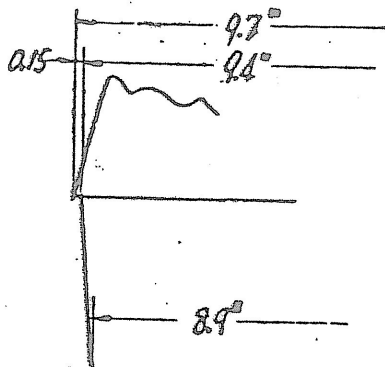
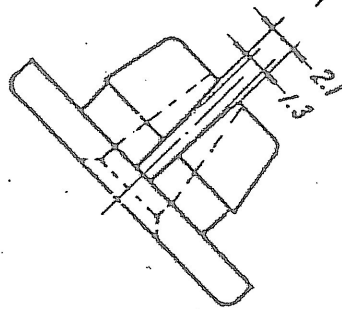
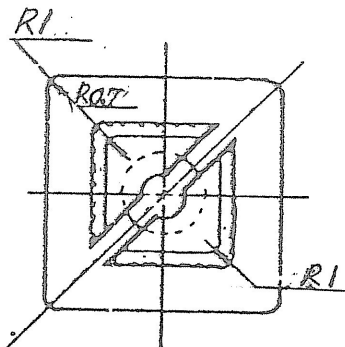
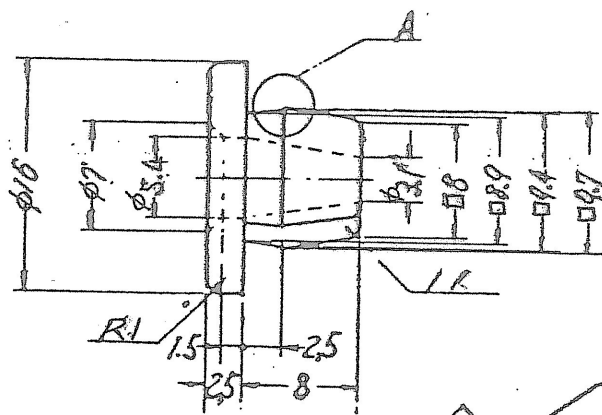


NOTES

1. THIS NUT IS EQUIVALENT TO NIFUKO CO. PRODUCT  
 NO. 100 .

PART NAME NUT		△						
PART NUMBER <del>09148-04021</del> 94515258		△						
REF. DWG.		△	1	BT3-0217D	P/No CONVERSION	03.12.1	J.H.PARK	
				BT2-0302	REDW'G	92.12.31		
MATERIAL NYLON 6		HEAT TREATMENT		SURFACE FINISHING		SCALE 2:1	PAGE 1/1	
DWG. BY 권혁		CHECKED BY		APPRD BY		APPRD BY		
기종: /	BLK: /	WT: 0.3	SZ: 4					





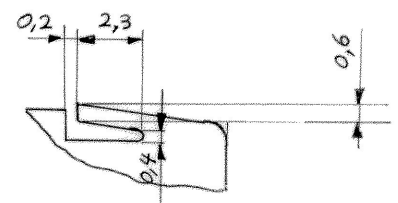
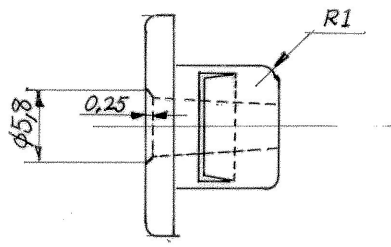
"A" DETAIL



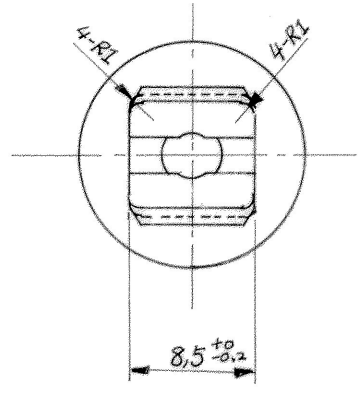
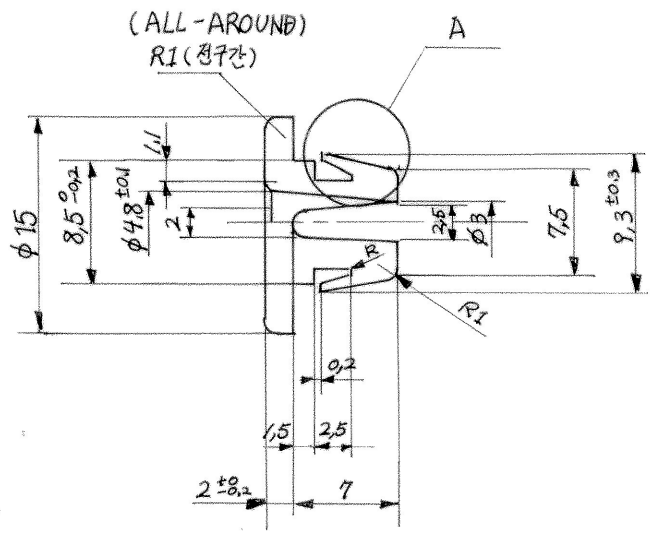
HOLE SIZE	: $\square 9$
PNL THICK	: $1.2 \sim 1.6$
SCREW	: M6

- NOTE  $\triangle$
- RESTRICTED AND REPORTABLE SUBSTANCES FOR PARTS PER GMW3059.
  - 부품의 구성 성분은 GMW 3059에 따라 금지 또는 신고하여야 한다.

PART NAME NUT		$\triangle$				
PART NUMBER $\triangle 94515285$ <del>09148 06006</del>		$\triangle$				
REF. DWG.		REV.	Q'TY	ECN. NO.	CONTENTS	DATE
MATERIAL NYLON 6		HEAT TREATMENT		SURFACE FINISHING		SCALE N: S
DWG. BY 서익원		CHECKED BY 권혁		APPRD BY [Signature]		PAGE 1/1
기종	BLK	WT: 1.1	SZ: 4	<b>대우조선공업주식회사</b> DAEWOO SHIPBUILDING & HEAVY MACHINERY LTD.		



A 부 상세  
A PART DETAIL



NOTE

RESTRICTED AND REPORTABLE SUBSTANCES  
FOR PARTS PER GMW3059.  
부품의 구성 성분은 GMW 3059에 따라  
금지 또는 신고되어야 한다.

PANEL HOLE  
t: 0.7, □ 8.5<sup>+0.15</sup> HOLE  
(CORNER R: 4-R0.5)

△									
△									
②	1	PCT0019D1	01.8.30	NOTE ADDED					
①	1	TT3-0002D	03.02.10	P/NO CHANGED.					
△		TS2-0327	92.12.17	REDWG					
REV	Q'TY	ECN. NO.	DATE	CONTENTS	RVD' BY	CHKD BY	APPVD BY		
PART NUMBER		△ 94 515 286		PART NAME	NUT			GEN. TOL.	
<del>09148-06009</del>								DES2101a	
REF. DWG				DSND BY	CHKD BY	APPVD BY	APPVD BY		
MATERIAL				정진경	thw	[Signature]	Geat		
PA-6				SURFACE FINISHING					
HEAT TREATMENT				DATE	1992. 10. 26.	WT:	0.6	SZ:	4
기종:		BLK:		SCALE	N:5	PAGE	1/1	대우조선공업주식회사 DAEWOO SHIPBUILDING & HEAVY MACHINERY Ltd.	