

«UzAuto Motors» AJ
TEXNIK TOPSHIRIQ



22TT-9029-00022

2022-02-17

TEXNIK TOPSHIRIQ TT

Butlovchi qism nomi	94530176 - CLAMP-A/CL ADAP DUCT 94530170 - CLAMP, HARN 94530169 - CLAMP 94530179 - CLAMP ASM-RR BRK PIPE 94530196/99/0213/0218/0145 - CLAMP
Texnik ko`rsatkichlari	Material: SPCC t=1 Plastifakator RSS76R
Butlovchi qismga texnika-	<p style="text-align: center;">Mahsulotni qabul qilish</p> <p>Masulotni sifati bo`yicha qabul qilish buyurtmachining “Butlovchi qismlarni kiritish nazorati” standartiga asosan amalga oshiriladi.</p> <p>Mahsulotni miqdor va sifati bo`yicha qabul qilish buyurtmachining korxonasida ta`minotchining vakili ishtirokida amalga oshiriladi.</p> <p>Yetkazib berilgan mahsulot miqdori buyurtmachi tomonidan taqdim etilgan talabnomaga binoan, yozma yoki elektron shaklda kelishilgan shaklda berilgan hajmlarga mos kelishi lozim.</p> <p style="text-align: center;">Mahsulot sifati</p> <p>Ta`minotchi buyurtmachiga mahsulotni buyurtmachi tomonidan joriy etilgan me`yor va o`rnatilgan standart, mahsulotni sifatini, chizmalar talablari, me`yoriy xujjatlar, nazorat qilish usullari asosida yetkazib berilishiga kafolat beradi.</p>

texnologik talablar	<p>Mahsulot materialini, tuzilishini yoki hujjatlarni bir tomonlama o`zgartirilishga yo`l qo`yilmaydi.</p> <p>Buyurtmachi mahsulot sifatini va ta`minotchining ekologik sertifikatini mavjudligini tekshirish huquqiga ega va zarur hollarda bu tekshirish huquqi bevosita iste`molchiga ham berilishi mumkin.</p> <p style="text-align: center;">Sifat kafolati.</p> <p>Agar mahsulot kam yetkazib berilishi va sifat nomuvofiqligi, qadoqsiz va o`ramasiz yoki talab darajasida bo`lmagan qadoqda va o`ramada kelganligi, markasiz yoki talab darajada markalanmaganligi ta`minotchi vakili ishtirokida aniqlansa, ta`minotchi 3 (uch) ish kunida ushbu kamchiliklarni bartaraf etishi va yetishmayotgan miqdorini o`z mablag`lari xisobidan to`ldirilishi lozim, shuningdek buyurtmachidan yozma xabar(pochta, faks, electron pochta) qabul qilinganidan keyin yoki yetkazib berilgan sanadan boshlab 1 (bir) ish kuni ichida tegishli idishga qadoqlash, markalash ishlarini</p>
Butlovchi qismning ishlatilish joyi	bajarishi kerak. Yig'uv va Payvandlash sexida ishlatiladi
Narx qismi	Eng yaxshi takliflarini tanlash konkursida ko`rsatilgan narxlar eng past narxdan oshmasligi kerak va keyinchalik o`zgartirilishi mumkin emas. Taqdim qilingan narxlar O`zbekiston Respublikasi milliy valyutasi so`mda va qo`shimcha qiymat solig`i (QQS) bilan ko`rsatilishi lozim.
Fotosurat	Ilovada ko'rsatilgan.
Chizmasi va umumiy talablar	Ilovada ko'rsatilgan.

Tara va Qadoqalash

Butlovchi qismni yetkazib berishda shakli va hajmi ta`minotchi tomonidan ishlab chiqilgan va buyurtmachi bilan kelishilgan maxsus idishlar ishlatiladi va buyurtmachi bilan kelishilgan talablarga ko`ra markalanishi lozim.

Mahsulotni yetkazib berishda quyidagi ma`lumotlarni o`z ichiga olgan yorliq yopishtiriladi.

- avtomobil turi;
- butlovchi qism nomi, raqami va soni;
- ta`minotchining kodi;
- yetkazib berish joyi;
- idish hajmi, qadoqlash sanasi, nazorat xolati va boshqalar.

Qo`shimcha talablar

Butlovchi qismni yetkazib berishda shakli va hajmi ta`minotchi tomonidan ishlab chiqilgan va buyurtmachi bilan kelishilgan maxsus idishlar ishlatiladi va buyurtmachi bilan kelishilgan talablarga ko`ra markalanishi lozim.

Mahsulotni yetkazib berishda quyidagi ma`lumotlarni o`z ichiga olgan yorliq yopishtiriladi.

- avtomobil turi;
- butlovchi qism nomi, raqami va soni;
- ta`minotchining kodi;
- yetkazib berish joyi;
- idish hajmi, qadoqlash sanasi, nazorat xolati va boshqalar.

Boshqaruvchi direktor



2022-02-17 15:15

**S. M.
Jumaniyazov**
2022-02-17 11:05

Rozilik

Boshqarma boshlig'i

*Global xarid qilish va ta'minot tizimi
boshqarmasi*



2022-02-17 11:05

U. P. Ruzibayev
2022-02-16 17:17

Bo'lim boshlig'i

Maxallillashtirish bo'limi



2022-02-16 18:36

D. K. Annaqov
2022-02-16 17:17

Bo'linma boshlig'i

HVAC, shassi va uzellar bo'linmasi



2022-02-16 17:17

E. I. Qilichov
2022-02-16 15:43

Mas'ul

Muhandis-texnolog

*Interior, Exterior va kuzov qismlari
bo'linmasi*

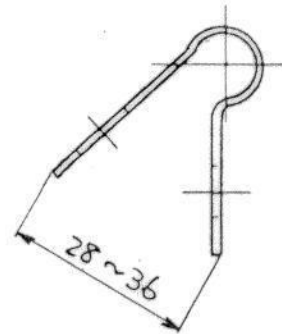
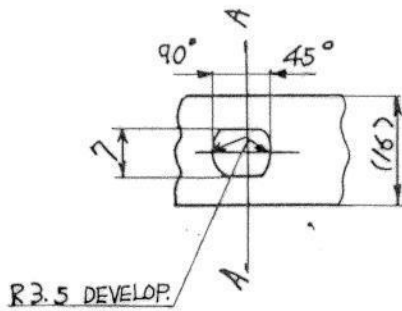


2022-02-16 15:43

**B. R.
Qutlimuratov**
2022-02-16 15:43

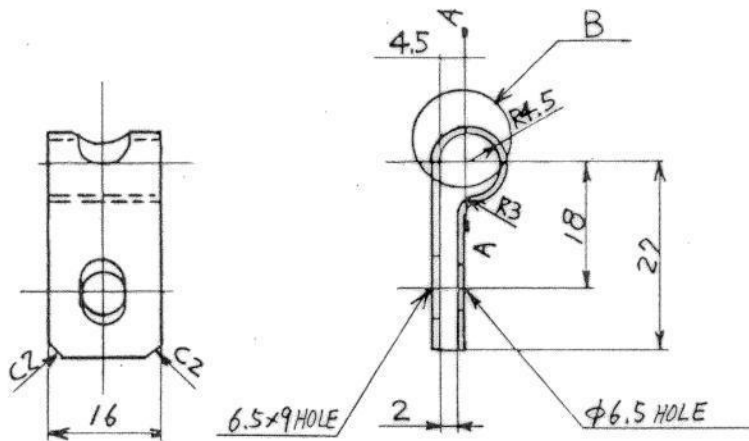
THIRD ANGLE PROJECTION

DO NOT SCALE DRAWING



B DETAIL (VIEW C)

↓ WHEN DELIVERED SHAPE

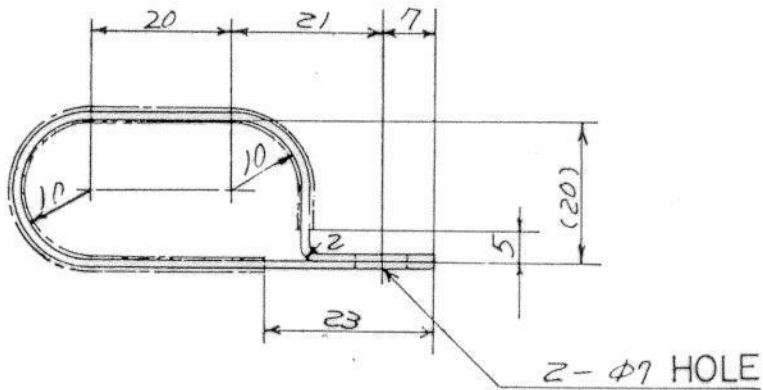
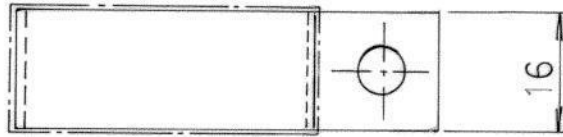


NOTE 1. NO BURRS

t = 1.0

2. Restricted and Reportable Substance for parts per GMW 3-59.


△									
△									
△	1	CT3-0004L	10-1e-03	NOTE Added	WAS DWG NO. 09403-06405		S.S.B	B.W.	C.S.
△		CT2-0300	'92.12.30		REDRAWN		S.S.B		
REV	Q'TY	ECN. NO.	DATE	CONTENTS			RVD' BY	CHKD BY	APPVD BY
PART NUMBER				PART NAME				GEN. TOL.	
△ 94 530145				CLAMP				DESD2101a	
REF. DWG				DSND BY	CHKD BY	APPVD BY	APPVD BY		
MATERIAL				SURFACE FINISHING		S. PARK	B. YUN		
SPCC				MFZn13-G					
HEAT TREATMENT				DATE	WT:	SZ:			
				1992. 11. 18.	8 g	4			
기종:		BLK.		SCALE	PAGE	대우조선공업주식회사 DAEWOO SHIPBUILDING & HEAVY MACHINERY Ltd.			
				N:S	1/1				

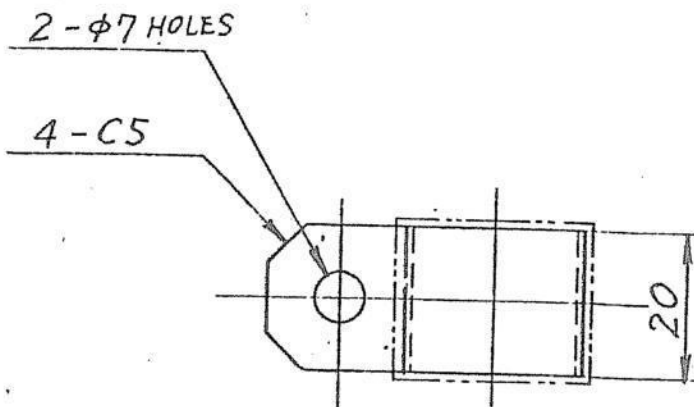
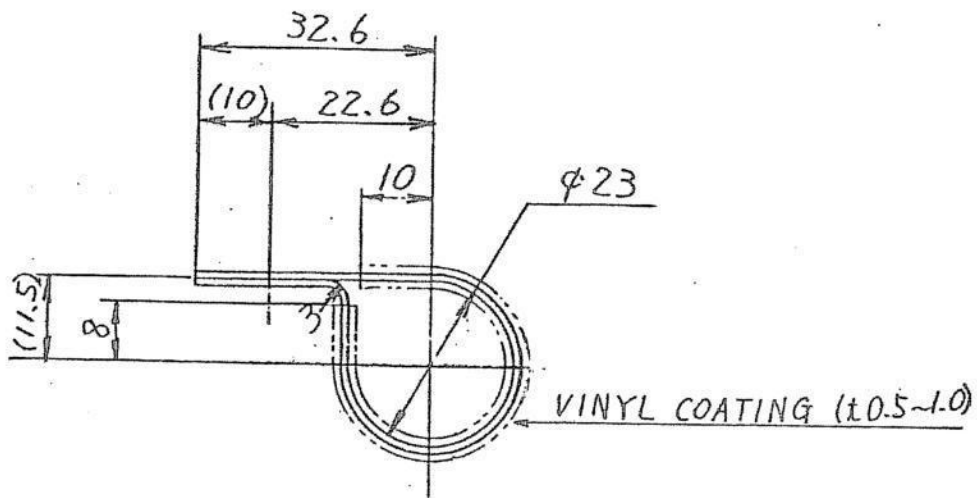


NOTE

- RESTRICTED AND REPORTABLE SUBSTANCES FOR PARTS PER GMW3059.
- 부품의 구성 성분은 GMW 3059에 따라 금지 또는 신고되어야 한다.

△							
△							
△	1	PC6100355B	07.8.29	ADDED NOTE (GMW 3059)	신부용	-	C.S. LEE
△	1	ET3-0020D	03.2.15	GM P/NO CONV	김동국	-	
△	-	WT2-0281	92.12.10	REDRAWN	I. K. KIM		
REV	Q'TY	ECN. NO.	DATE	CONTENTS	RVD' BY	CHKD BY	APPVD BY

PART NUMBER 09403-19401 94530169		PART NAME CLAMP, HOSE, NO.1				GEN. TOL. DESD2101a	
REF. DWG		DSND BY	CHKD BY	APPVD BY	APPVD BY		
MATERIAL SECC, 1.0 ^t		SURFACE FINISHING VINYL COATING (0.5 ~ 1.0 ^t)		I. K. KIM	[Signature]		
HEAT TREATMENT		DATE 1992. 11. 7.		WT: 1.99 gr	SZ: 4		
기종:		SCALE 1:1	PAGE 1/1		 대우조선공업주식회사 DAEWOO SHIPBUILDING & HEAVY MACHINERY Ltd.		



NOTE

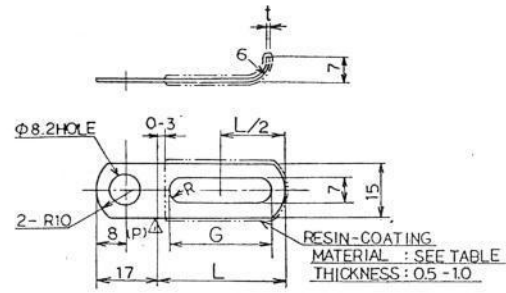
- RESTRICTED AND REPORTABLE SUBSTANCES FOR PARTS PER GMW3059.
- 부품의 구성 성분은 GMW 3059에 따라 금지 또는 신고되어야 한다.



△										
△										
△	1	PCE00247	01.8.31	Add GMW3059						
△	1	WT3-0216D	03.12.01	CHANGED, PART NO.					C.S. Lee	
△		WT2-0281	92. 12. 10	REDRAWING						
REV	Q'TY	ECN. NO.	DATE	CONTENTS	RVD'BY	CHKD BY	APPVD BY			
PART NUMBER				PART NAME				GEN. TOL		
09403-23402-94 530 170				CLAMP				DESD2101a		
REF. DWG.				DSND BY		CHKD BY		APPVD BY		APPVD BY
MATERIAL SPCC-NS, 1.0t				SURFACE FINISHING MFZn5-G		원준성 柳洙陽		[Signatures]		[Signature]
HEAT TREATMENT				DATE 1992. 11. 17.		WT: 21		SZ: 4		
기종:		BLK:		SCALE 1:1		PAGE 1/1		대우조선공업주식회사 DAEWOO SHIPBUILDING & HEAVY MACHINERY Ltd.		

THIRD ANGLE PROJECTION
DO NOT SCALE DRAWING

No.	PART No	PLATING	피복 COATING MATERIAL	L	G	t	특별 지시 사항, SPECIAL DESIGNATED ITEM, 비고	
△ 94530197	08404							
	1	08204	DFZnCr2	VINYL	35	28	0.6	
△ 94530200	08404							
	2	08401	MFZn5-8	VINYL				
	3	08203	DFZnCr2	VINYL	65	55	0.8	
	4	08403	MFZn5-8	VINYL				
	5	08204	DFZnCr2	VINYL	85	75	0.8	
	6	08404	MFZn5-8	VINYL				
7	-							
8	08402	MFZn5-8	VINYL	50	40	0.7		
9	-							
10	08405	MFZn5-8	VINYL	110	100	1.0		
11	-							
12	08413	MFZn5-8	VINYL	65	55	1.0		
13	-							
14	08415	MFZn5-8	HEAT-RESISTANT VINYL	55	45	0.8	p=7	
15	-							



DEVELOPED SHAPE

NOTE: BE FREE FROM BURRS.
주기: BURR가 없으실것.

* PART NUMBERING METHOD(REFERENCE)*

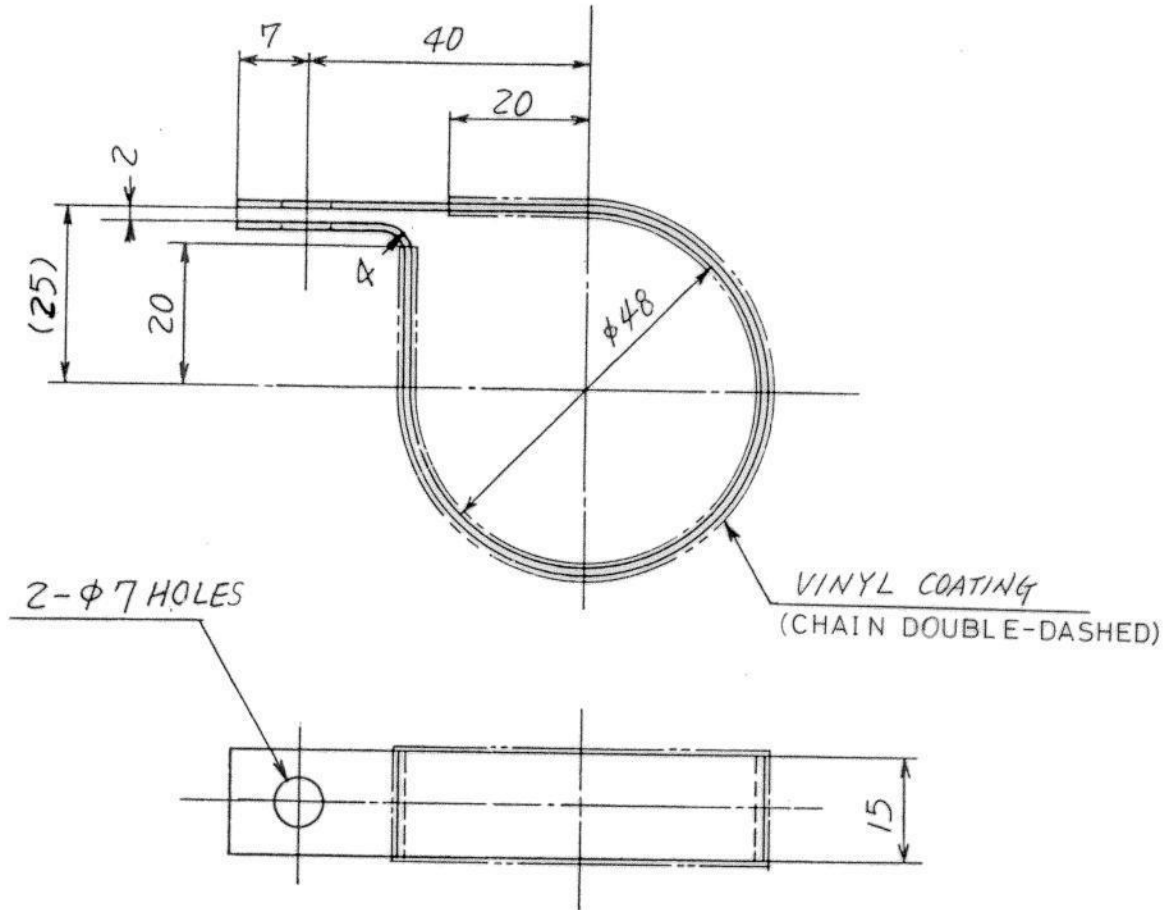


CAD

REV/QT	ECN NO.	DATE	CONTENTS
3	REDESIGNED	02.2.15	SM PLATE CONV
2		95.1.20	REFRAN
1			

PART NUMBER △ 94530197 09404-000000		PART NAME CLAMP		GEN TOL DES02101a	
REF. DWG	SURFACE FINISHING	DSND BY	CHKD BY	APPVD BY	APPVD BY
MATERIAL SPCC	SEE TABLE	장문호	long	春和	春和
HEAT TREATMENT	SCALE	DATE 1992. 12. 23	WT. 6.4g	SZ: A2	
	PAGE 1/1	대우조선공업주식회사 DAEWOO SHIPBUILDING & HEAVY MACHINERY LTD.			

ITEM	PART NO.	PART NAME	QTY	MATERIAL	REMARKS
					기종: Y7T BLK: CB500



NOTE

1. DIMENSION : BEFORE VINYL COATING SHOWN.

△ NOTE

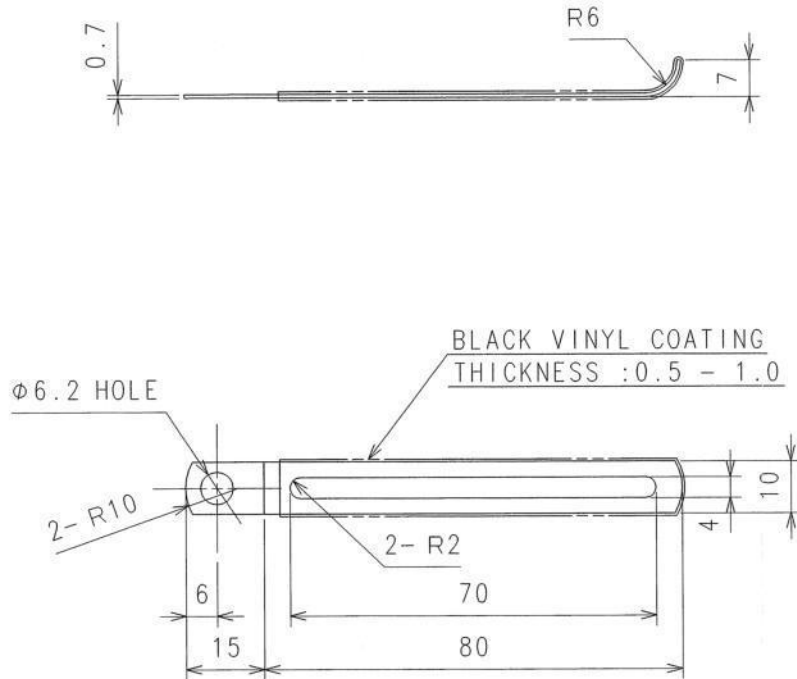
주 기

1. 치수 : 비닐 코팅 전에 명시.

- RESTRICTED AND REPORTABLE SUBSTANCES FOR PARTS PER GMW3059.
 - 부품의 구성 성분은 GMW 3059에 따라 금지 또는 신고되어야 한다.

△									
△									
△	1	PCG0034LL	07.8.29	ADDED NOTE		공 동훈	-	CSL	CSL
△	1	ES3-0011T	03.2.15	GM P/NO CONV.		김동수	-		
⊗		ET3-1014	92.01.20	NEW DESIGN		이동현	영리		
REV	Q'TY	ECN. NO.	DATE	CONTENTS		RVD' BY	CHKD' BY	APPVD BY	
PART NUMBER				PART NAME				GEN. TOL	
△ 09403-48401 94530176				CLAMP				DESD2101a	
REF. DWG		SURFACE FINISHING		DSND BY	CHKD BY	APPVD BY	APPVD BY		
MATERIAL SECC t1.0		VINYL COATING t0.5 ~ 1.0		이동현	영리 12/8	최광원 12/14	최광원 92.12.11		
HEAT TREATMENT		SCALE		DATE		WT:	SZ:		
		1:1		1992. 11. 18.		28.5g	A4		
기종:		BLK:		PAGE		대우조선공업주식회사 DAEWOO SHIPBUILDING & HEAVY MACHINERY Ltd.			
				1/1					

DWG NO. 94 530 196



주 기

- 날카로운 부위가 없을것.
- 표면처리 : EZnP-B5(EDS-M-3106)
- 부품의 구성 성분은 GMW3059에 따라 금지 또는 신고되어야 한다.

NOTES

- MUST BE FREE FROM BURRS.
- ③ - FINISH : EZnP-B1(EDS-M-3106)
- ②① - RESTRICTED AND REPORTABLE SUBSTANCES FOR PARTS PER GMW3059.

COMPUTER GRAPHICS CHANGE RESTRICTED NO MANUAL CHANGES



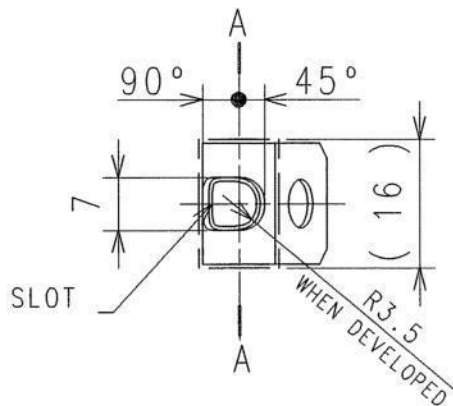
DATE	SYM	ZONE	REVISION RECORD	AUTHORITY	DS	CK	AP
30NOV07	3	A4	ADDED FINISH	PCE0031D1	SYS	YCS	B
	2	A4	WAS EDS-A-0101				
21MRO3	1	A4	ADDED EDS-A-0101	PCT4234M1	GJY	PCS	
16SEP02	-	-	P/NAME CHANGED	PBA0104J2	J	C	L
	-	-	WAS DWG NO.09404-06421				
20DEC96	-	-	APPLIED TO DRAFTING STANDARDS	PBE0207T1	O	W	K
	-	-	REDRAWN				
08MY96	-	-	PRODUCTION RELEASE	PBE0085T1	W	W	K

PROPERTY OF DAEWOO MOTOR CO.(COPYRIGHT).THIS DRAWING MUST NOT BE REPRODUCED OR DISCLOSED TO THIRD PARTIES WITHOUT THE PRIOR CONSENT OF DAEWOO MOTOR CO. ALL RIGHT RESERVED.
 본 도면은 대우자동차(주)의 재산임(본권).본 도면은 대우자동차(주)의 사전 승인없이 복제하거나, 제3자에게 공개 할수없으며, 무단권한은 당사기 보유하고 있음.

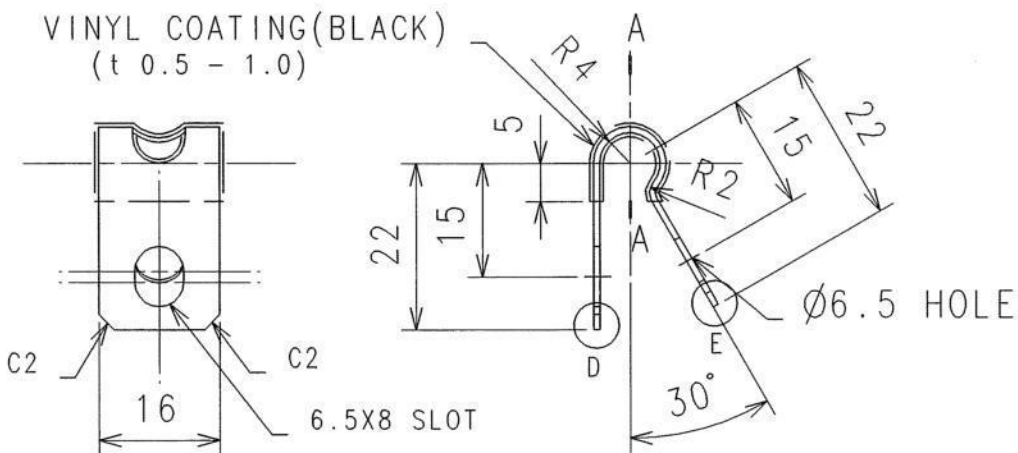


DIMENSIONS ARE IN MILLIMETERS. ALLOWABLE VARIATION ON ALL
 치수는 mm 임. 보통 치수 허용치
 DIMENSIONS ARE ± UNLESS OTHERWISE SPECIFIED
 임.

PROJ NO.	DWG DATE	SCALE	DSGN	CHK	APR
	20, DE, 96	1 : 1	오학준	원준성	김성수
MATERIAL			WEI-GHT	EST-ACT	
SPCC(EDS-M-1101)				7g	7g
도 명					
고정용 클램프 (구멍형), NO6					
NAME					
CLAMP-FIXING HOLE, NO6					
DRAWING NO.					SIZE
94 530 196					A3



VINYL COATING (BLACK)
(t 0.5 - 1.0)



- MATERIALS AND COMPONENTS OF PARTS MUST COMPLY WITH EDS-A-0101.

- MUST BE FREE FROM BURRS.

- ① - PORTIONS -D & -E : C2
- FINISH : EZnP-A5 (EDS-M-3106)
- UNSPECIFIED TOLERANCE : CONFORM TO EDS-A-1101.
- ② - MUST BE FREE OF HEXAVALENT CHROMIUM.
- ③ - RESTRICTED AND REPORTABLE SUBSTANCES FOR PARTS PER GMW 3059

COMPUTER GRAPHICS CHANGE RESTRICTED NO MANUAL CHANGES

2008. 1. 0 9

DATE	SYM	REVISION RECORD	AUTHORITY	DS	CK	AP
31AU073		NOTE ADDED	PCD0016D1	SB	DW	WCS
20SE062		Cr6+ FREE ADDED	PCD5030M1	SB	DW	WCS
14NC051		WAS ZnP-A4 (EDS-M-3101)	PBA0214T2	MK	SR	WCW
		- P/NAME CHANGED				
23MY05		- REDRAWN W/O CHANGED	PCD4940M1	SB	CS	MG
20MR03		- ADDED EDS-A-0101	PCD4217M1	SB	CS	MG
30DE92		- PRODUCTION RELEASE	CS2-0349	SB	CS	MG

PROPERTY OF GM DAEWOO AUTO&TECHNOLOGY. (COPYRIGHT). THIS DRAWING MUST NOT BE REPRODUCED OR DISCLOSED TO THIRD PARTIES WITHOUT THE PRIOR CONSENT OF GM DAEWOO AUTO&TECHNOLOGY. ALL RIGHT RESERVED.

본 도면은 지엠대우오토엔지니어링(주)의 재산임(판권). 본 도면은 지엠대우오토엔지니어링(주) 사전 승인없이 복사하거나 제3자에게 공개 할수없으며, 모든권한은 당사가 보유하고 있음

DIMENSIONS ARE IN MILLIMETERS. ALLOWABLE VARIATION ON ALL DIMENSIONS ARE ± UNLESS OTHERWISE SPECIFIED

치수는 mm 임. 보통 치수 허용차 는 UNLESS OTHERWISE SPECIFIED 임.

PROJ NO.	DWG DATE	SCALE	DSGN	CHK	APR
-	23, MY, 05	1 : 1	심수복	오창식	김문곤

MATERIAL	WEI-GHT	EST
SPCC t0.8		5g
	ACT	-

도 명 고정용 클램프 (개방형), NO8

NAME CLAMP-FIXING OPEN, NO8

DRAWING NO.	SIZE
94 530 179	A4

OK