

«UzAuto Motors» AJ  
**TEXNIK TOPSHIRIQ**



22TT-9029-00066

2022-04-13

TEXNIK TOPSHIRIQ TT

Butlovchi qism nomi	94584020/4021 - SUPPORT ASM-FRT SUSP R/L butlovchi qismining komponenti 94584027 - BOSS, INTERMEDIATE ARM
Texnik ko`rsatkichlari	Material: 1. STKM-13A vtulka d=20mm
Butlovchi qismga texnika-texnologik talablar	<p style="text-align: center;"><b>Mahsulotni qabul qilish</b></p> <p>Masulotni sifati bo`yicha qabul qilish buyurtmachining “Butlovchi qismlarni kiritish nazorati” standartiga asosan amalga oshiriladi.</p> <p>Mahsulotni miqdor va sifat bo`yicha qabul qilish buyurtmachining korxonasida ta`minotchining vakili ishtirokida amalga oshiriladi.</p> <p>Yetkazib berilgan mahsulot miqdori buyurtmachi tomonidan taqdim etilgan talabnomaga binoan, yozma yoki elektron shaklda kelishilgan shaklda berilgan hajmlarga mos kelishi lozim.</p> <p style="text-align: center;"><b>Mahsulot sifati</b></p> <p>Ta`minotchi buyurtmachiga mahsulotni buyurtmachi tomonidan joriy etilgan me`yor va o`rnatilgan standart, mahsulotni sifatini, chizmalar talablari, me`yoriy xujjatlar, nazorat qilish usullari asosida yetkazib berilishiga kafolat beradi.</p> <p>Mahsulot materialini, tuzilishini yoki hujjatlarni bir tomonlama o`zgartirilishga yo`l qo`yilmaydi.</p> <p>Buyurtmachi mahsulot sifatini va ta`minotchining ekologik sertifikatini mavjudligini tekshirish huquqiga ega va zarur hollarda bu tekshirish huquqi bevosita iste`molchiga ham berilishi mumkin.</p> <p style="text-align: center;"><b>Sifat kafolati.</b></p>

	<p>Agar mahsulot kam yetkazib berilishi va sifat nomuvofiqligi, qadoqsiz va o`ramasiz yoki talab darajasida bo`lmagan qadoqda va o`ramada kelganligi, markasiz yoki talab darajada markalanmaganligi ta`minotchi vakili ishtirokida aniqlansa, ta`minotchi 3 (uch) ish kunida ushbu kamchiliklarni bartaraf etishi va yetishmayotgan miqdorini o`z mablag`lari xisobidan to`ldirilishi lozim, shuningdek buyurtmachidan yozma xabar(pochta, faks, electron pochta) qabul qilinganidan keyin yoki yetkazib berilgan sanadan boshlab 1 (bir) ish kuni ichida tegishli idishga qadoqlash, markalash ishlarini bajarishi kerak.</p>
Butlovchi qismning ishlatilish joyi	Presslash sexida ishlatiladi
Narx qismi	Eng yaxshi taklifni tanlash konkursida ko`rsatilgan narxlar eng past narxdan oshmasligi kerak va keyinchalik o`zgartirilishi mumkin emas. Taqdim qilingan narxlar O`zbekiston Respublikasi milliy valyutasi so`mda va qo`shimcha qiymat solig`i (QQS) bilan ko`rsatilishi lozim.
Fotosurat	Ilovada ko'rsatilgan.
Chizmasi va umumiy talablar	Ilovada ko'rsatilgan.

	<p style="text-align: center;"><b>Tara va Qadoqalash</b></p>
<p>Qo`shimcha talablar</p>	<p>Butlovchi qismni yetkazib berishda shakli va hajmi ta`minotchi tomonidan ishlab chiqilgan va buyurtmachi bilan kelishilgan maxsus idishlar ishlatiladi va buyurtmachi bilan kelishilgan talablarga ko`ra markalanishi lozim.</p> <p>Mahsulotni yetkazib berishda quyidagi ma`lumotlarni o`z ichiga olgan yorliq yopishtiriladi.</p> <ul style="list-style-type: none"> <li>– avtomobil turi;</li> <li>– butlovchi qism nomi, raqami va soni;</li> <li>– ta`minotchining kodi;</li> <li>– yetkazib berish joyi;</li> <li>– idish hajmi, qadoqlash sanasi, nazorat xolati va boshqalar.</li> </ul> <p>Butlovchi qismni yetkazib berishda shakli va hajmi ta`minotchi tomonidan ishlab chiqilgan va buyurtmachi bilan kelishilgan maxsus idishlar ishlatiladi va buyurtmachi bilan kelishilgan talablarga ko`ra markalanishi lozim.</p> <p>Mahsulotni yetkazib berishda quyidagi ma`lumotlarni o`z ichiga olgan yorliq yopishtiriladi.</p> <ul style="list-style-type: none"> <li>– avtomobil turi;</li> <li>– butlovchi qism nomi, raqami va soni;</li> <li>– ta`minotchining kodi;</li> <li>– yetkazib berish joyi;</li> <li>– idish hajmi, qadoqlash sanasi, nazorat xolati va boshqalar.</li> </ul>

---

**Boshqaruvchi direktor**



2022-04-13 16:39

**S. M.  
Jumaniyazov**  
2022-04-13 11:16

**Rozilik**

---

**Boshqarma boshlig'i**

*Global xarid qilish va ta'minot tizimi  
boshqarmasi*



2022-04-13 11:16

**U. P. Ruzibayev**  
2022-04-12 14:02

**Bo'lim boshlig'i**

*Maxallillashtirish bo'limi*



2022-04-12 15:42

**D. K. Annaqov**  
2022-04-12 14:02

**Bo'linma boshlig'i**

*Interior, Exterior va kuzov qismlari  
bo'linmasi*



2022-04-12 14:02

**G. A. Saidov**  
2022-04-12 11:34

**Mas'ul**

---

**Muhandis-texnolog**

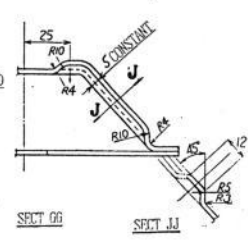
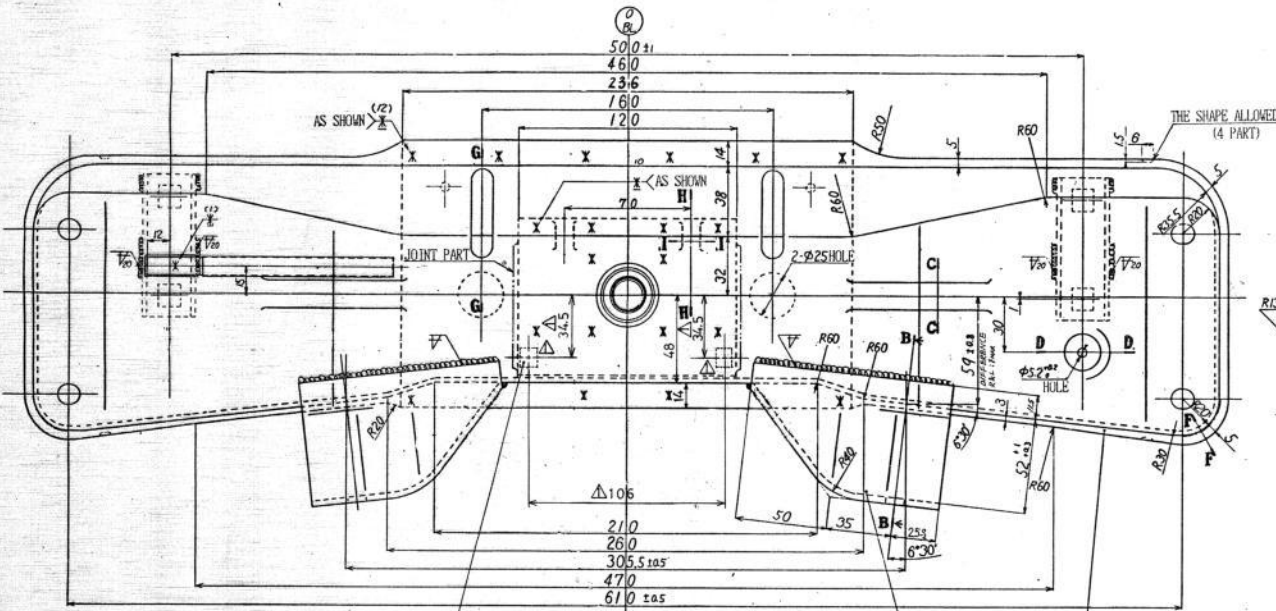
*Interior, Exterior va kuzov qismlari  
bo'linmasi*



2022-04-12 11:23

**B. R.  
Qutlimuratov**  
2022-04-12 11:34

F E D C B A  
 THIRD ANGLE PROJECTION  
 DO NOT SCALE DRAWING



NOTE

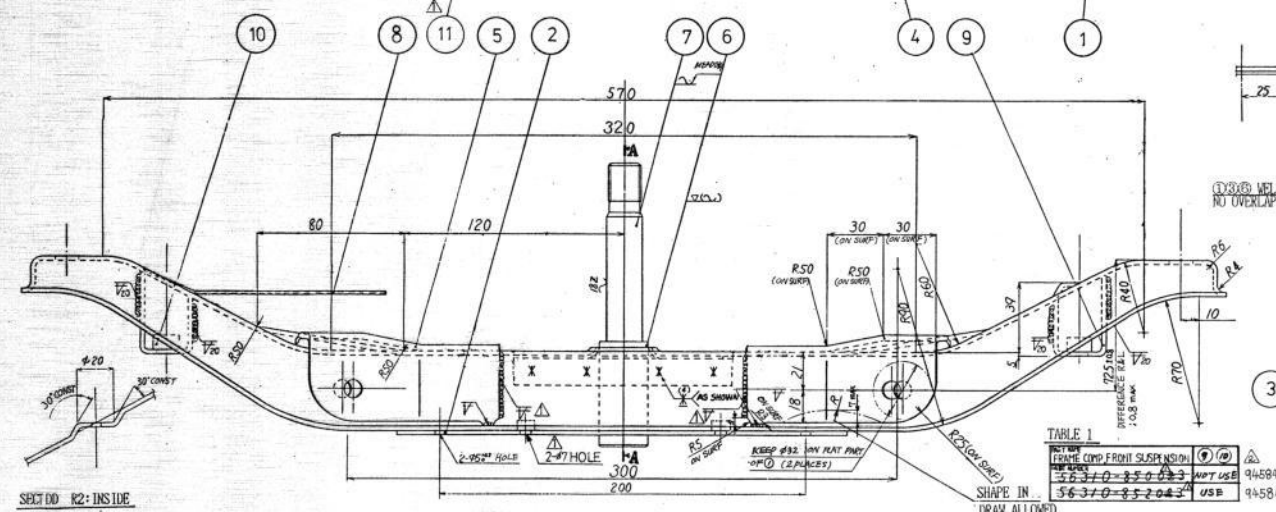
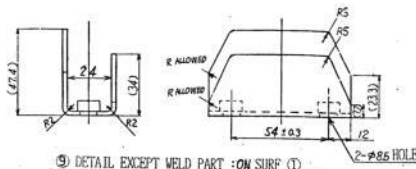
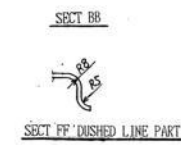
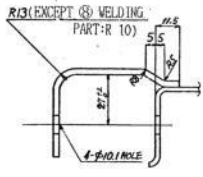
- 1) WELDING PART MUST WITHSTAND PIN TORSIONAL TORQUE OF 2000Kg-cm.
- 2) APPLY HEAT TREATMENT TO  $\phi 20$  PIN. (HRC 20-27).
- 3) APPLY PAINTING TO BOX INSIDE.
- 4) IN SPOT WELDING, (B) CAN BE ALLOWED ALONG (D). (TAKE CARE OF PAINTING).
- 5) BE FREE FROM PAINT RUNS ON M18 TREAD.
- 6) THIS DWG SHOWS DIFFERENCE OF EACH COMP TO TABLE 1 & TABLE 2.

(A) NOTE

NO POOR WELDING & UNDERCUT AROUND WELD PERMITTED.

(B) NOTE

RESTRICTED AND REPORTABLE SUBSTANCES:  
 FOR PARTS PER GMW3059.  
 부품의 구성 성분은 GMW 3059에 따라  
 금지 또는 신고되어야 한다.



SECT DD R2: INSIDE

(C) DETAIL

(B) POSITIONING DETAIL

SECT CC

TABLE 1

REV	DATE	DESCRIPTION	BY	CHKD
1	94584020	INITIAL DRAW	USB	94584021
2	94584021	REVISION	USB	94584021

ITEM	PART NO.	PART NAME	QTY	MATERIAL	REMARKS
11	08315-01069-94584021	NUT, ENGINE UNDER COVER	2		
10	08315-01089-94584021	NUT, STABILIZER BAR BRACKET	4		
9	56320-85204-94584020	BRACKET, STABILIZER BAR	2	SPHC-P 12.3	
8	56327-79004-94584020	CLAMP, WATER HOSE	1	SPCC 11.0	
7	56324-85000-94584020	PIN, INTERMEDIATE ARM	1	S45C	
6	56323-85000-94584020	BOSS, INTERMEDIATE ARM	1	STKM13A	
5	56318-85000-94584020	BRACKET, SUSPENSION ARM, L	1	SPHC-P 13.2	
4	56317-85000-94584020	BRACKET, SUSPENSION ARM, R	1	SPHC-P 13.2	
3	56313-85000-94584020	REINFORCEMENT, INTMD ARM BOSS	1	SPHC-P 11.6	
2	56312-85000-94584020	REINFORCEMENT, FRONT SPHNS	1	SPHC-P 12.3	
1	56311-85000-94584020	FRAME FRONT SUSPENSION	1	SPHC-P 12.3	

PART NUMBER  
 56310-85202-3  
 56310-85002-3

PART NAME  
 FRAME COMP, FRONT SUSPENSION

REF. DWG  
 MATERIAL  
 SEE TABLE  
 HEAT TREATMENT

SURFACE FINISHING  
 019 7C (CATHODIC E-COATING)  
 DATE 1992. 11. 24.  
 WT: 4,180.0g  
 SZ: 2

SCALE  
 N:S  
 1/1

DAEWOO SHIPBUILDING & HEAVY MACHINERY LTD.  
 1992. 11. 24.

REV	QTY	ECN NO.	DATE	CONTENTS
0	1	CT2 0300	1992.12.30	RE-DRAWN
1	1	CT2 0300	1992.12.30	RE-DRAWN

REDESIGNED ACC. TO  
 CT2-0300

GEN. TOL.  
 DES02101a

APPROVED BY: [Signature]  
 DATE: 1992. 11. 24.