

<b>ХИЗМАТ ХАТИ</b>		КЕЛИШИЛДИ	Бажарувчи Ж.Эргашев	Харид ва логистика бўлими бошлиғи Исманов В	Бош ҳисобчи Ж.Олимов
			Исцо		
Хужжат №		Ёзилган санаси	16 август 2022 йил		
Жўнатувчи		Қабул қилувчи	Директор		
Қабул қилувчи резолүцияси	<i>Исманов В. Эргашев И.</i>		Имзо	Сана	
Мавзу	<b>MIXING- LINE</b> ускунасини жойлаштирилиши бўйича қурилиш ишларини амалга ошириш юзасидан.				

GEM лойихаси доирасида “ONIX” ва “Tracker” русумли автомобилларга резина бутловчи эҳтиёт қисмлар ишлаб чиқариш учун жорий йилнинг ноябр ойида олиб келиниши кўзда тутилаётган “MIXING- LINE” ускунасини жойлаштириш бўйича зарур қурилиш ишларини амалга ошириш юзасидан “Маҳаллийлаштириш” бўлимининг 2022 йил 8 августдаги 031-сонли хизмат хати асосида қилиниши керак бўладиган қурилиш ишлари ўрганиб чиқилди ва техник топшириқлар тайёрланди. Бажарилиши керак бўлган қурилиш ишлари бўйича лойиха хужжатларини тайёрлатиш учун Давлат харидларини амалга оширишга керакли бўлимларга кўрсатма беришингизни сўрайман. Техник топшириқ ва бошқа турдаги зарур барча маълумотлар тақдим этилади.

Генеральный Директор

ООО « AUTO RUBBER»

Марахимов Ф.Х

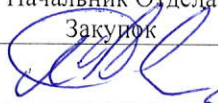
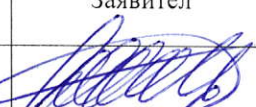


«\_\_\_» \_\_\_\_\_ 2022 г.

### ЗАЯВКА НА ЗАКУПКУ

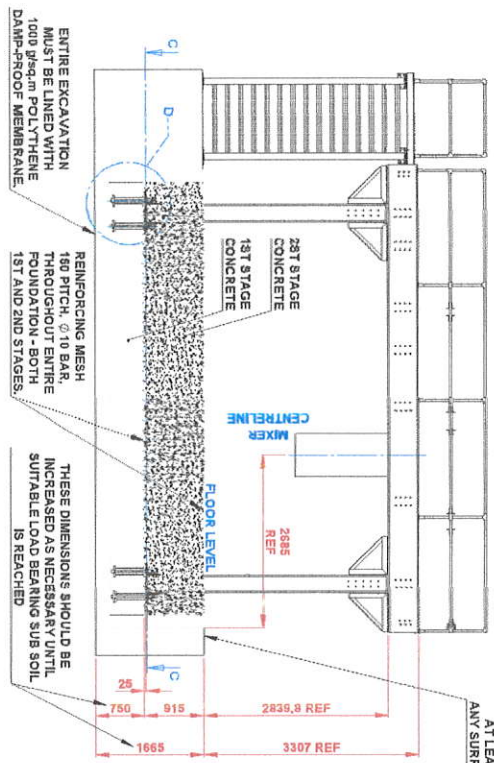
Отдел Заявитель	Администрация
Ф.И.О. Заявителя	Эргашев.Ж
Номер Заказа	
Дата Заказа	18.08.2022
Срок Поставки	
Цель Заказа	По проекту GEM установка площадки MIXING LINE

№	Код	Наименование по факту	Ед. изм.	Объем заказа	сумма
1.		MIXING LINE проектировать по Т.З.	Шт	1	
2.					
3.					
4.					

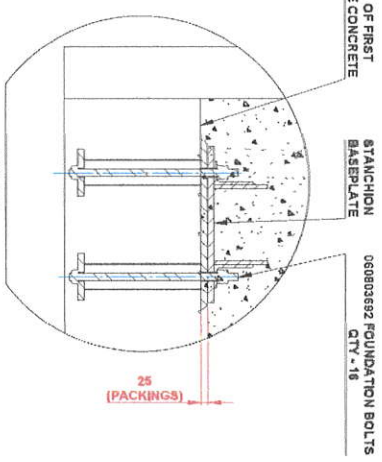
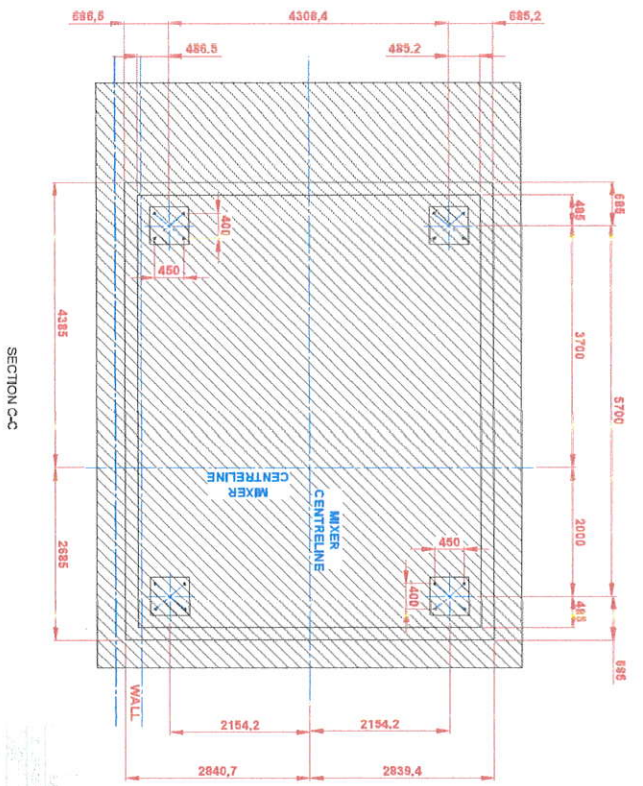
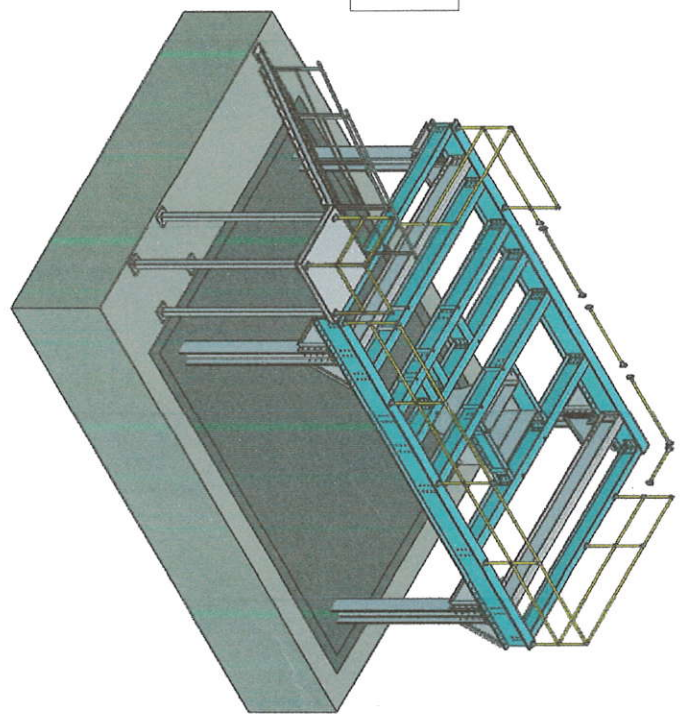
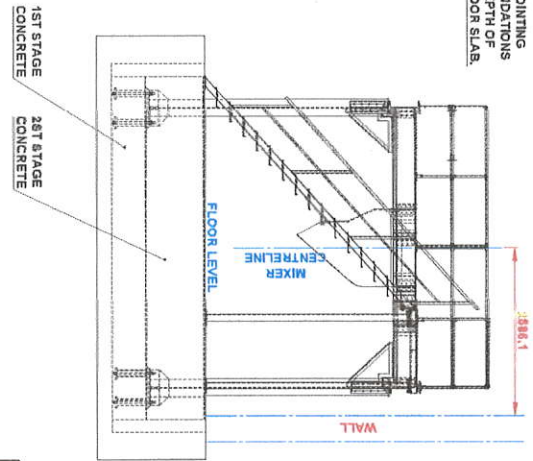
Примечание:

Начальник Отдела Закупок	Заявитель	Зав.Склад	Фин. Контроль	Бухгалтер
				

Дата << \_\_\_ >> \_\_\_\_\_ 2022г.



INSTALL FLEXIBLE JOINTING ROUND THE NEW FOUNDATIONS AT LEAST TO THE DEPTH OF ANY SURROUNDING FLOOR SLAB.



FOUNDATION BOLTS TO BE SET IN TEMPLATES AT LOCATIONS SHOWN, WITH TOP EDGE OF BOLT TUBE FLUSH WITH SURFACE OF FIRST STAGE CONCRETE. THE BOLT TUBES ARE TO BE HELD SECURELY IN THE CONCRETE BUT IT MUST BE POSSIBLE TO ARTICULATE THE BOLTS EASILY WHEN CONCRETE HAS CURED TO FACILITATE ALIGNMENT OF STANCHIONS. LE BOLTS SHOULD BE ARTICULATED PERIODICALLY, AS SOON AS TEMPLATES ARE REMOVED, UNTIL CONCRETE HAS CURED.

- NOTES:
1. BASE OF EXCAVATION TO BE COMPACTED, BLENDED AND OVERLAID WITH DAMP-PROOF MEMBRANE.
  2. 24 FOUNDATION BOLTS TO BE POSITIONED AT THE LOCATIONS SHOWN AND IN ACCORDANCE WITH THE DETAILS SHOWN.
  3. GRADE C35 CONCRETE TO BE POURED TO FIRST STAGE LEVEL, INCORPORATING 2 LAYERS OF REINFORCEMENT, AND FINISHED SMOOTH.
  4. AFTER ERECTION OF STILLAGE IS COMPLETED, GROUT IN FOUNDATION BOLTS AND STANCHION BASES.
  5. POUR SECOND STAGE C35 GRADE CONCRETE TO FLOOR LEVEL, WITH REINFORCEMENT NEAR TOP SURFACE.
  6. FLOAT FINISH.

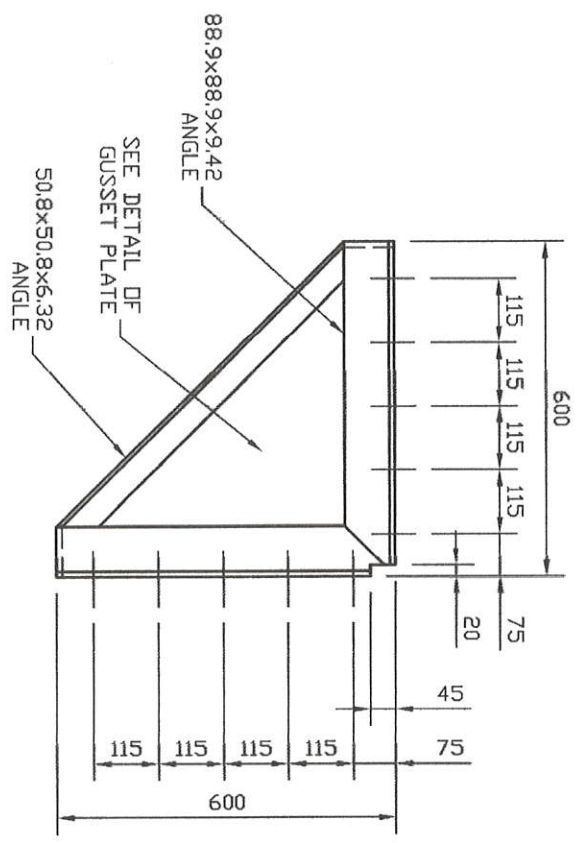
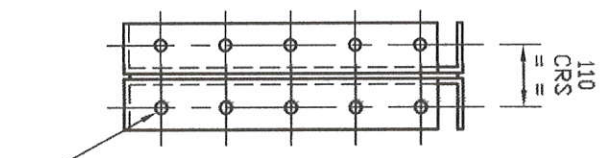
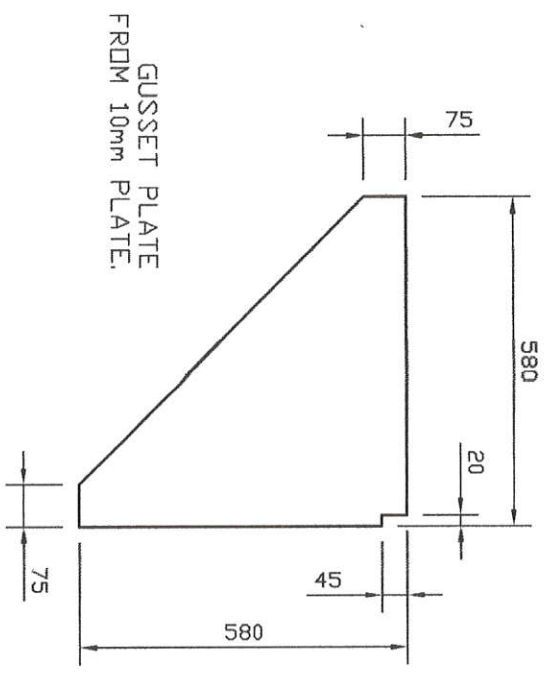
PRODUCT CODE

NO.	REVISION	DATE	BY	CHKD	APP'D	REASON
1						
2						
3						
4						
5						
6						
7						
8						
9						
10						

029A14615

STILLAGE & FOUNDATION DETAILS

REV	ZONE	REVISION	BY	DATE
A		ORIGINAL ISSUE		



PROJECTION	SYMBOL
FIRST ANGLE	
EUROPEAN	

EDMETRIC TOLERANCING TO BS 308	CHARACTERISTIC SYMBOL	SYMBOL	CHARACTERISTIC
EXAMPLE		φ 0.25	TOTAL TOLERANCE ZONE
		A	DATUM IDENTIFICATION
		φ 0.25	CYLINDRICITY
		0	ROUNDNESS
		0	FLATNESS
		0	PARALLELISM
		0	ANGULARITY

INDICATE	IMPLIED LIMITS FOR MACHINING DIMENSIONS
IMP	± 0.150 (0.0050)
SI	± 0.75 (0.0300)
	± 0.25 (0.0100)
	± 0.12 (0.0050)

ANGULAR ± 0° 30'

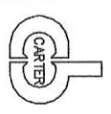
MACHINED RADI < UNLESS OTHERWISE STATED >  
UP TO AND INCL. 100 mm (4") ± 0.4 mm (0.015")  
OVER 100 mm (4") ± 0.8 mm (0.030")

REMOVE BURS

M/C SURFACE FINISH N7 UNLESS STATED OTHERWISE

CLASS OF SURFACE FINISH (AS PER BS 2869 - BS 2864 (MEDIUM CLASS 3) UNLESS OTHERWISE STATED OTHERWISE)

ITEM	QUAN	MATL	NAME	DESCRIPTION
4	240	STL	WASHER	Ø20
3	240	STL	HEX NUT	M20
2	240	STL	HEX BOLT	M20 X 60 LG
1	12	STL	BRACKET	STILLAGE MAINBEAM 31kg



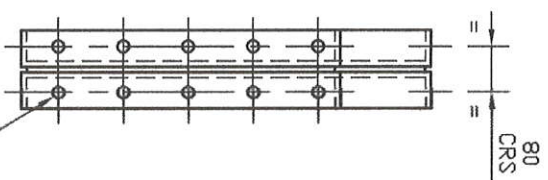
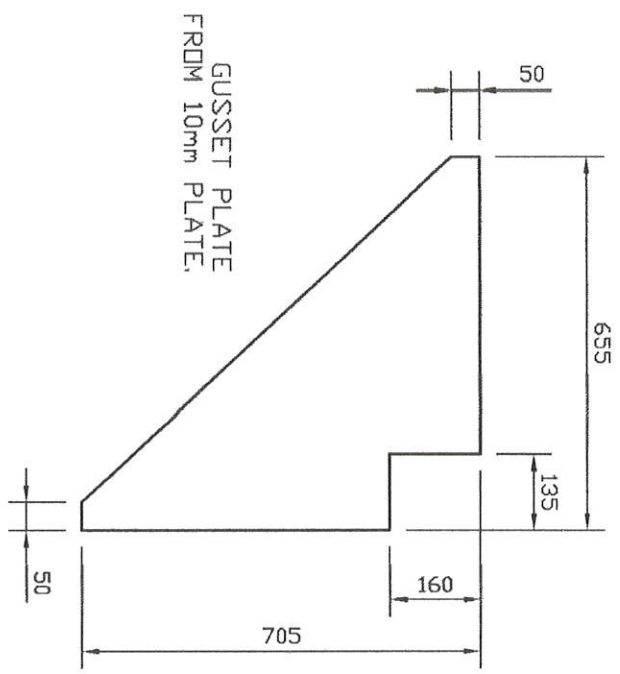
CARTER BROTHERS, Ltd.  
FIELDHOUSE INDUSTRIAL ESTATE, FIELDHOUSE ROAD  
ROCHDALE, OL12 0AA, ENGLAND

Tel: 01706 638301, Fax: 01706 526569, email: enquiries@carter-brothers.co.uk

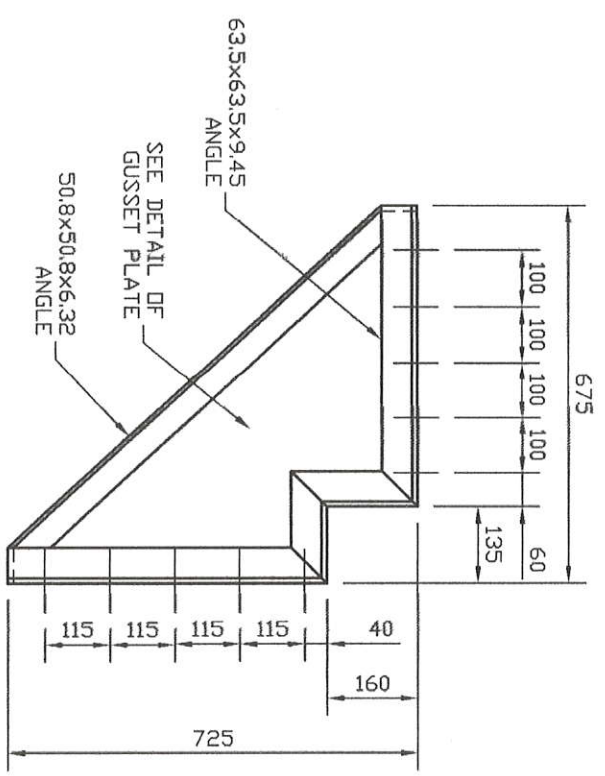
THIS DRAWING IS OWNED BY CARTER BROS. GROUPED LTD AND IS CONDITIONALLY LOANED TO THE RECIPIENT WHO BY RECEIVING IT HAS AGREED NOT TO REPRODUCE OR COPY IT IN WHOLE OR IN PART

FOR TO FURNISH INFORMATION FROM IT TO OTHERS NOR TO MAKE ANY USE OF IT THAT IS NOT THE SUBJECT OF WRITTEN AGREEMENT BY CARTER BROS. GROUPED LTD AND TO RETURN IT UPON REQUEST.

MACHINE	MK6	MIXER	S/D No.	SHEET	1	OF	1	
REF. DRGS.								
SCALE								
DRAWN	R.WALL	DATE						
CHKD		DATE						
APPR		DATE						
TITLE	MAIN BEAM BRACKETS						DRG No.	M81223 A
REV							QTY	-



20 HOLES DRILL  
Ø21 THROUGH.



GUSSET PLATE  
FROM 10mm PLATE.

ITEM	QUAN	MAT'L	NAME	DESCRIPTION
4	120	STL	WASHER	Ø20
3	120	STL	HEX NUT	M20
2	120	STL	HEX BOLT	M20 X 55 LG
1	6	STL	BRACKET	STILLAGE CROSSBEAM 34kg

**CARTER BROTHERS, Ltd.**  
FIELDHOUSE INDUSTRIAL ESTATE, FIELDHOUSE ROAD  
ROCHDALE, OL12 0AA, ENGLAND

Tel 01706 638301 Fax 01706 526569 email enquiries@carter-brothers.co.uk

THIS DRAWING IS OWNED BY CARTER BROS. GROUPED LTD AND IS CONDITIONALLY LOANED TO THE RECIPIENT WHO BY RECEIVING IT HAS AGREED NOT TO REPRODUCE OR COPY IT IN WHOLE OR IN PART

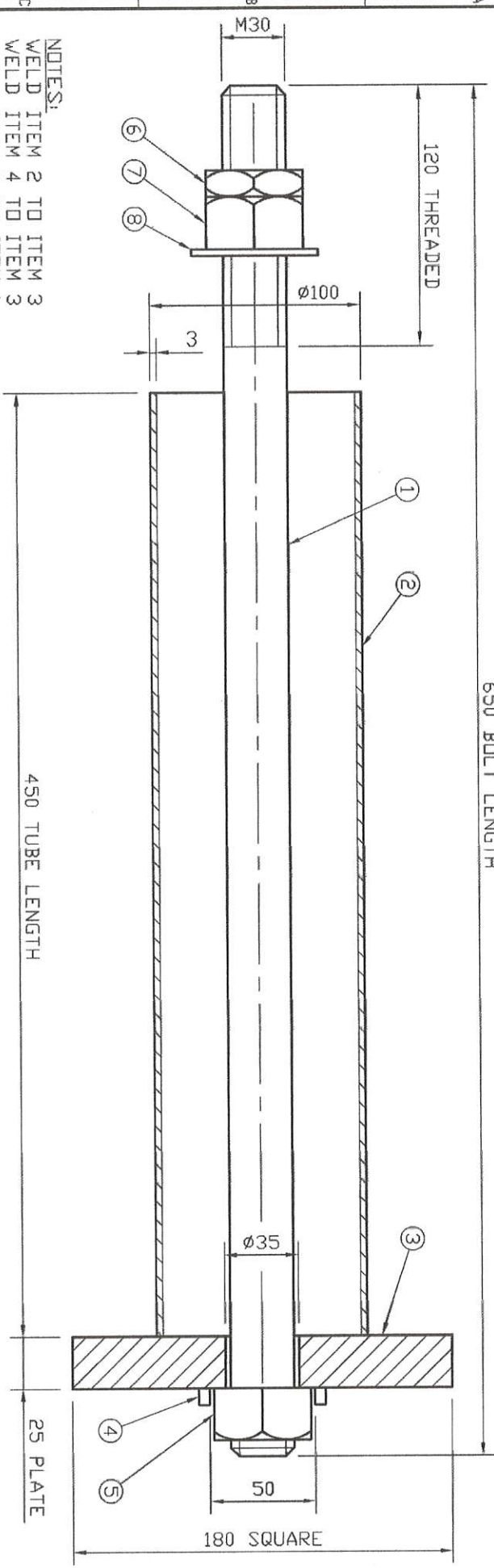
FOR TO FURNISH INFORMATION FROM IT TO OTHERS NOR TO MAKE ANY USE OF IT THAT IS NOT THE SUBJECT OF WRITTEN AGREEMENT BY CARTER BROS. GROUPED LTD AND TO RETURN IT UPON REQUEST.

FIRST ANGLE PROJECTION		ECONOMIC TOLERANCING TO BS 308		CHARACTERISTIC SYMBOL	
M/C SURFACE FINISH < EUROPEAN >		EXAMPLE		TOTAL TOLERANCE ZONE	
ROUGHNESS NUMBER	NOMINAL VALUE < R0.8 >	SYMBOL	CHARACTERISTIC	SYMBOL	CHARACTERISTIC
N5	0.4	16	CYLINDRICITY	—	STRAIGHTNESS
N6	0.8	32	ROUNDNESS	⊥	SQUARENESS
N7	1.6	63	FLATNESS	○	POSITION
N8	3.2	125	PARALLELISM	⊙	CONCENTRICITY
N9	6.3	250	ANGULARITY	⊠	DATUM INDICATOR
N10	12.5	500			

INDICATE		IMPLIED LIMITS FOR MACHINING DIMENSIONS	
IMP UNITS	SI UNITS	TOL.	
X	X	± 1.50 (0.050)	
XX	XX	± 0.75 (0.030)	
XXX	XXX	± 0.25 (0.010)	
XXXX	XXXX	± 0.12 (0.005)	

MACHINE MK6 MIXER		S/D No.		SHEET 1 OF 1	
REF. DRGS.		TITLE	CROSS BEAM BRACKETS		
SCALE		DRAWN R./WALL	DATE	DATE	QTY.
1:10		CHKD	DATE	DATE	
STEEL		APPD	DATE	DATE	
MATERIAL		DRG No.		REV	
		M81222A		A	

650 BOLT LENGTH



NOTES:  
 WELD ITEM 2 TO ITEM 3  
 WELD ITEM 4 TO ITEM 3  
 WELD ITEM 5 TO ITEM 1

ITEM	QUAN	MAT'L	NAME	DESCRIPTION
8	1	STL	WASHER	Ø 30 PLAIN
7	1	STL	NUT	M30 HX FULL
6	1	STL	LOCKNUT	M30 HX
5	1	STL	FIXED NUT	M30 HX FULL
4	2	BS970 070M20	SNUG	8 x 5 x 35 Lg
3	1	BSEN10025F e430A	PLATE	180 Sq x 25 Th
2	1	BS6323	TUBE	Ø100x3x450
1	1	BS970 070M20	BOLT	Ø30x650

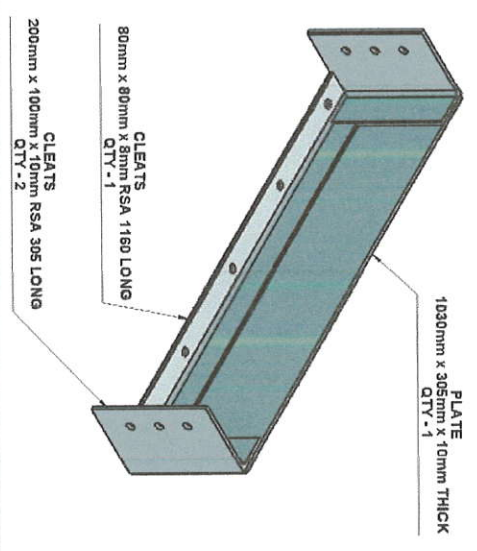
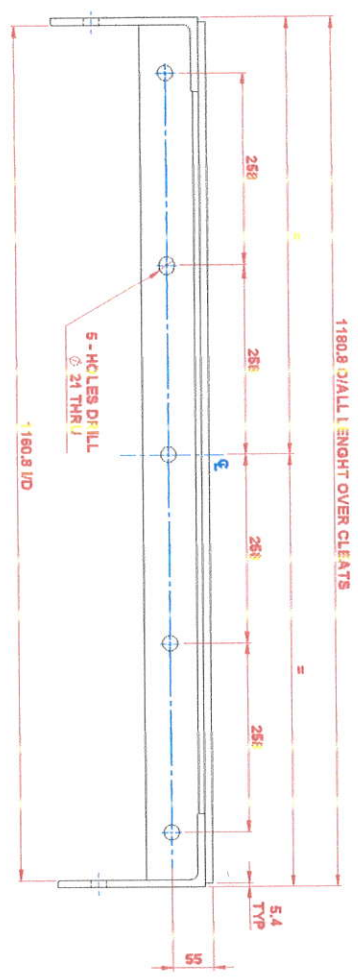
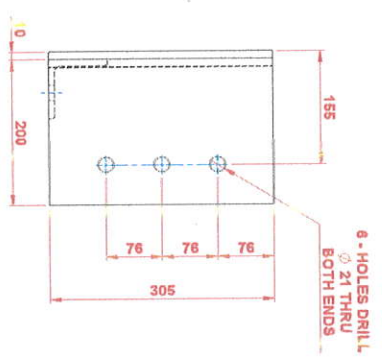
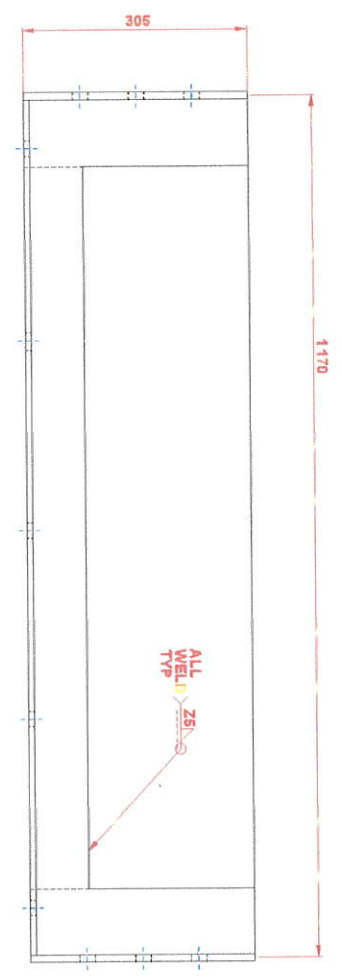
**CARTER**  
 Tel: 01706 538301, Fax: 01706 565559, email: enquiries@carter-nixers.co.uk  
**MELLOR STREET, ROCHDALE, OL12 6XQ, ENGLAND.**  
**CARTER BROS. (ROCHDALE) Ltd.**

THIS DRAWING IS OWNED BY CARTER BROS (ROCHDALE) LTD AND IS CONDITIONALLY LOANED TO THE RECIPIENT WHO BY RECEIVING IT HAS AGREED NOT TO REPRODUCE OR COPY IT IN WHOLE OR IN PART.  
 FOR TO FINISH INFORMATION FROM IT TO OTHERS NOR TO MAKE ANY USE OF IT THAT IS NOT THE SUBJECT OF WRITTEN AGREEMENT BY CARTER BROS (ROCHDALE) LTD. AND TO RETURN IT UPON REQUEST.

GEOMETRIC TOLERANCING TO BS 308	CHARACTERISTIC SYMBOL	SYMBOL	CHARACTERISTIC	SYMBOL	CHARACTERISTIC
EXAMPLE	TOTAL TOLERANCE ZONE	⊕	CHARACTERISTIC	⊕	CHARACTERISTIC
⊕ 0.25	POSITION	⊕	CHARACTERISTIC	⊕	CHARACTERISTIC
⊕ 0.25	CONCENTRICITY	⊕	CHARACTERISTIC	⊕	CHARACTERISTIC
⊕ 0.25	PARALLELISM	⊕	CHARACTERISTIC	⊕	CHARACTERISTIC
⊕ 0.25	ANGULARITY	⊕	CHARACTERISTIC	⊕	CHARACTERISTIC

INDICATE	IMPLIED LIMITS FOR MACHINING DIMENSIONS
IMP	TOL
SI	± 1.50 (0.050")
	± 0.75 (0.030")
	± 0.25 (0.010")
	± 0.12 (0.005")

REF. DRGS	SCALE	DATE	DATE	DATE	DATE
	1:2	16.01.95	16.01.95		



ITEM NO.	DESCRIPTION	QTY	UNIT
1	PLATE	1	EA
2	CLEATS	2	EA

ITEM NO.	DESCRIPTION	QTY	UNIT
3	WELDS	1	EA

ITEM NO.	DESCRIPTION	QTY	UNIT
4	COVER PLATES (PUMP HOLE)	1	EA

PRODUCT CODE

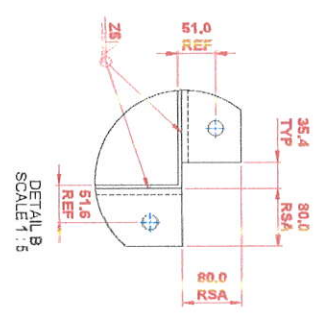
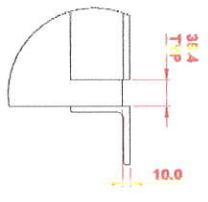
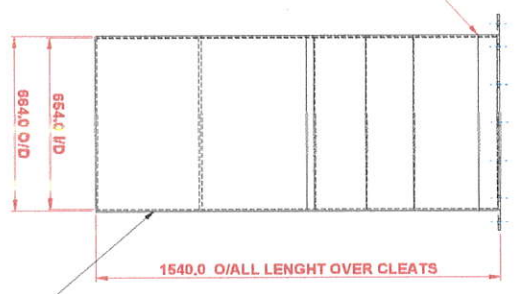
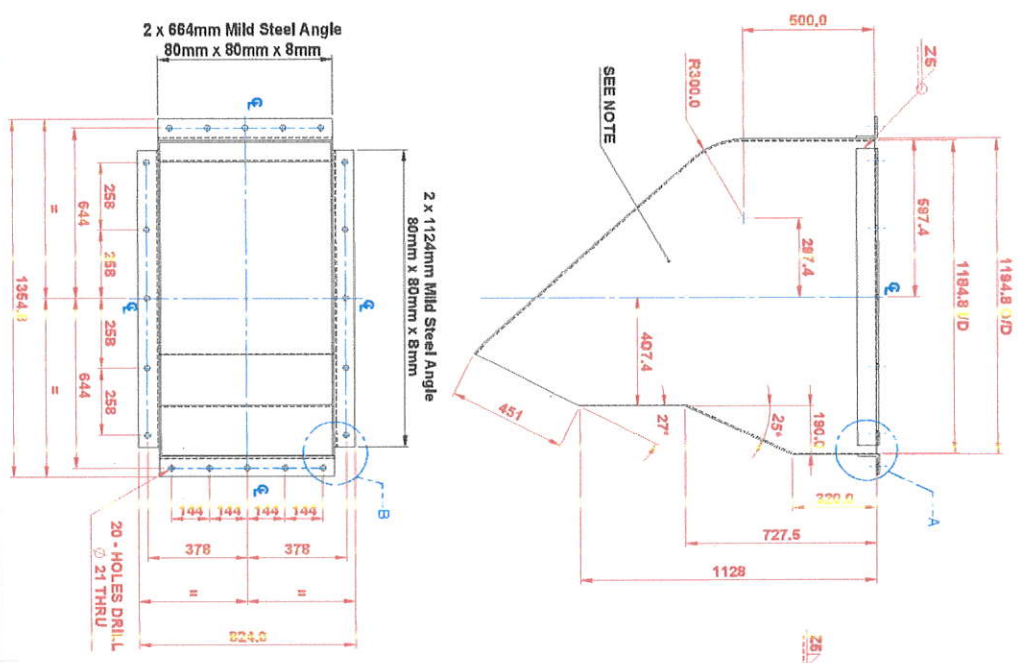
CARTER BROTHERS (ROCHDALE) LTD.  
 UNIT 30, STAKEHILL INDUSTRIAL ESTATE, MIDDLETON  
 MANCHESTER, M24 2RW, ENGLAND

MATERIAL	SCALE	DATE	DATE	DATE	DATE
MILD STEEL	1:5	14/07/22	14/07/22	14/07/22	14/07/22

DATE	DATE	DATE	DATE	DATE
14/07/22	14/07/22	14/07/22	14/07/22	14/07/22

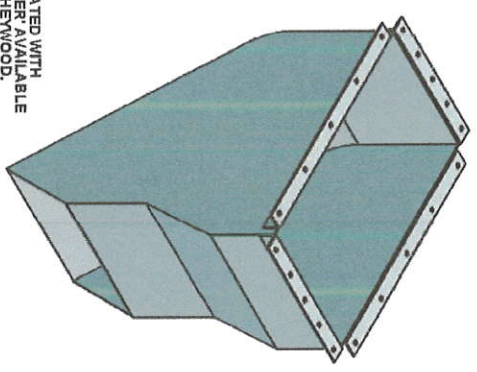
DATE	DATE	DATE	DATE	DATE
14/07/22	14/07/22	14/07/22	14/07/22	14/07/22

DATE	DATE	DATE	DATE	DATE
14/07/22	14/07/22	14/07/22	14/07/22	14/07/22



ALL INTERNAL WELDS TO BE DRESSED SMOOTH AND BLENDED IN WITH ADJACENT SURFACES

MATERIAL: 5 mm THICK M.S.  
 NOTE:  
 INTERNAL SURFACES TO BE TREATED WITH 2 COATS OF ARMORCLAD SEALER AVAILABLE FROM ARMORCLAD COATINGS, HEWWOOD. THE SEALER TO BE APPLIED EXACTLY TO ARMORCLAD INSTRUCTIONS.

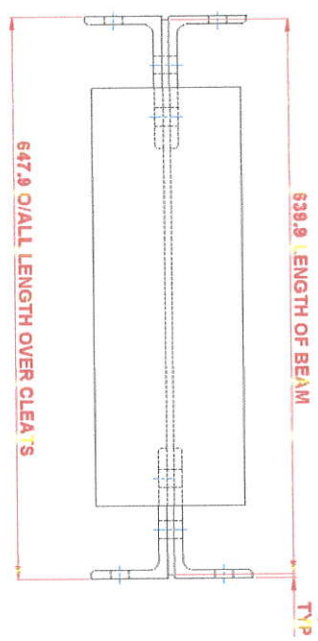
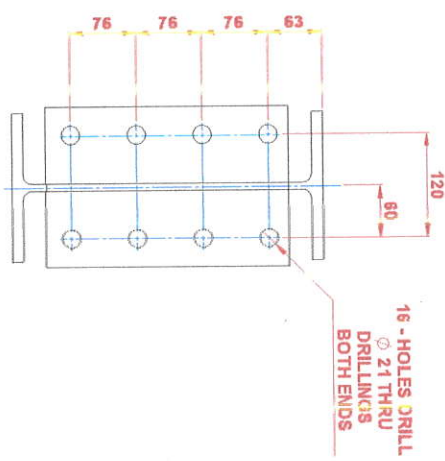
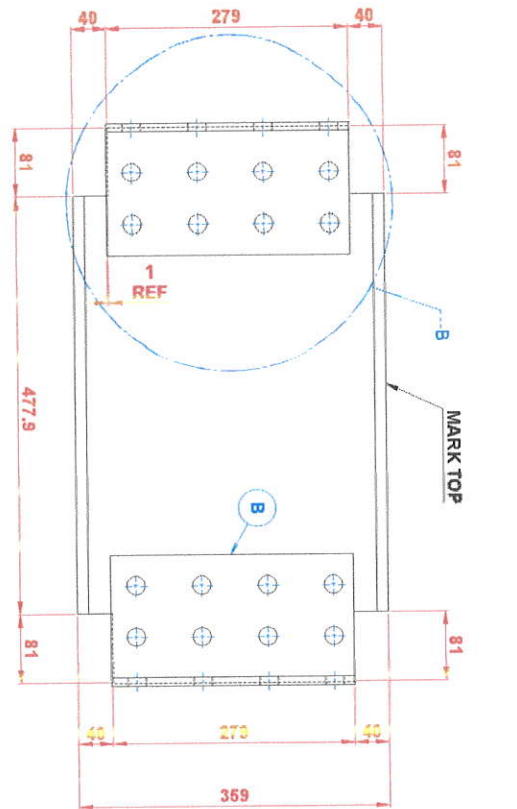


CARTER BROTHERS (ROCHDALE) LTD.  
 UNIT 30, STAKEHILL INDUSTRIAL ESTATE, MIDDLETON  
 MANCHESTER, M24 2RW, ENGLAND

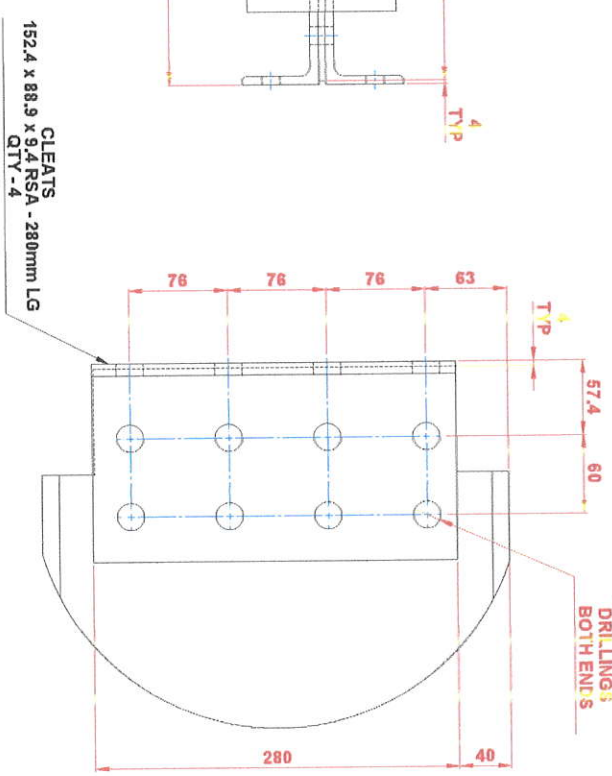
TRADING NAME: <b>DUCT</b> MANUFACTURER: <b>CARTER BROTHERS (ROCHDALE) LTD.</b> PRODUCT CODE: <b>029D14637</b>		QUANTITY: <b>1</b> ORDER REFERENCE: <b>029D14637</b>	
DRAWING NO: <b>029D14637</b> DATE: <b>14/07/2022</b>		SCALE: <b>1:5</b> DRAWN BY: <b>DCP</b> CHECKED BY: <b>DCP</b>	
MATERIAL: <b>MILD STEEL</b>		FINISH: <b>AS SUPPLIED</b>	
WEIGHT: <b>226.00 KG</b>		DIMENSIONS: <b>1194.8 x 684.0 x 1540.0</b>	

ALL DIMENSIONS IN MILLIMETERS UNLESS OTHERWISE SPECIFIED DIMENSIONS TO CENTRE UNLESS OTHERWISE SPECIFIED DIMENSIONS TO SURFACE UNLESS OTHERWISE SPECIFIED DIMENSIONS TO EDGE UNLESS OTHERWISE SPECIFIED DIMENSIONS TO FACE UNLESS OTHERWISE SPECIFIED DIMENSIONS TO HOLE UNLESS OTHERWISE SPECIFIED DIMENSIONS TO CENTER UNLESS OTHERWISE SPECIFIED DIMENSIONS TO SURFACE UNLESS OTHERWISE SPECIFIED DIMENSIONS TO EDGE UNLESS OTHERWISE SPECIFIED DIMENSIONS TO FACE UNLESS OTHERWISE SPECIFIED DIMENSIONS TO HOLE UNLESS OTHERWISE SPECIFIED DIMENSIONS TO CENTER UNLESS OTHERWISE SPECIFIED	PRODUCT CODE <b>029D14637</b>
MANUFACTURER: <b>CARTER BROTHERS (ROCHDALE) LTD.</b> ADDRESS: <b>UNIT 30, STAKEHILL INDUSTRIAL ESTATE, MIDDLETON, MANCHESTER, M24 2RW, ENGLAND</b> TEL: <b>0161 275 1111</b> FAX: <b>0161 275 1112</b> EMAIL: <b>SALES@CARTERBROS.CO.UK</b> WEBSITE: <b>WWW.CARTERBROS.CO.UK</b>	TITLE: <b>DW/P CHUTE</b> SCALE: <b>1:5</b> DRAWN BY: <b>DCP</b> CHECKED BY: <b>DCP</b> DATE: <b>14/07/2022</b> DATE: <b>14/07/2022</b>
REV: <b>A</b>	029D14637

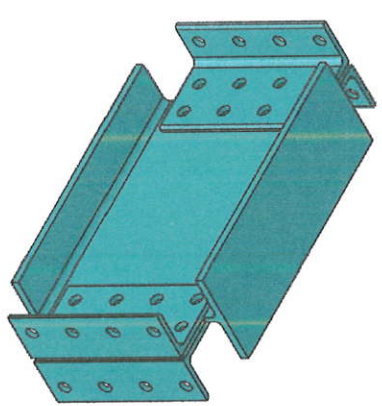




VIEW A  
SCALE 1:3

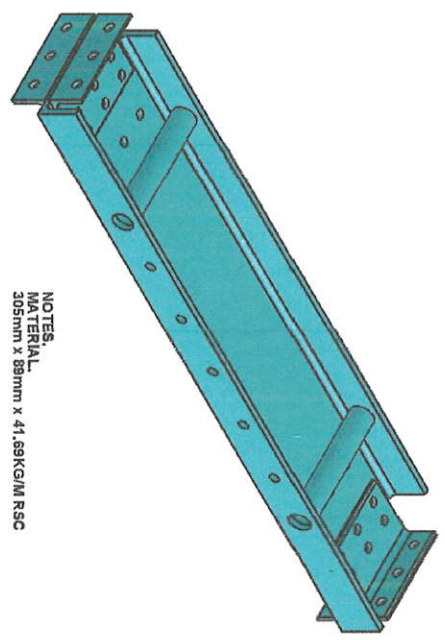
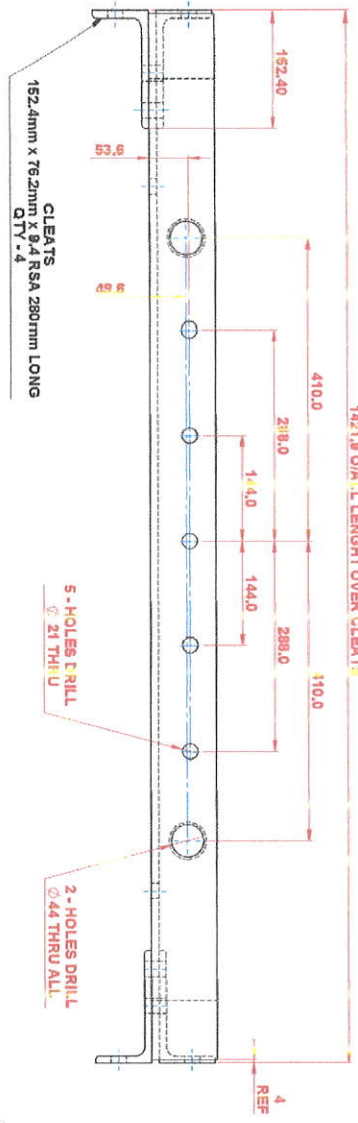
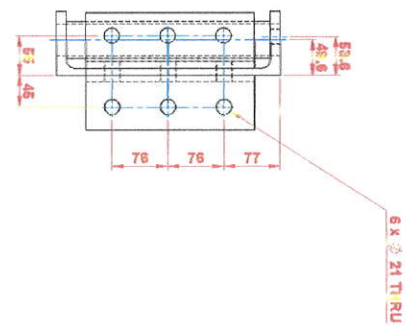
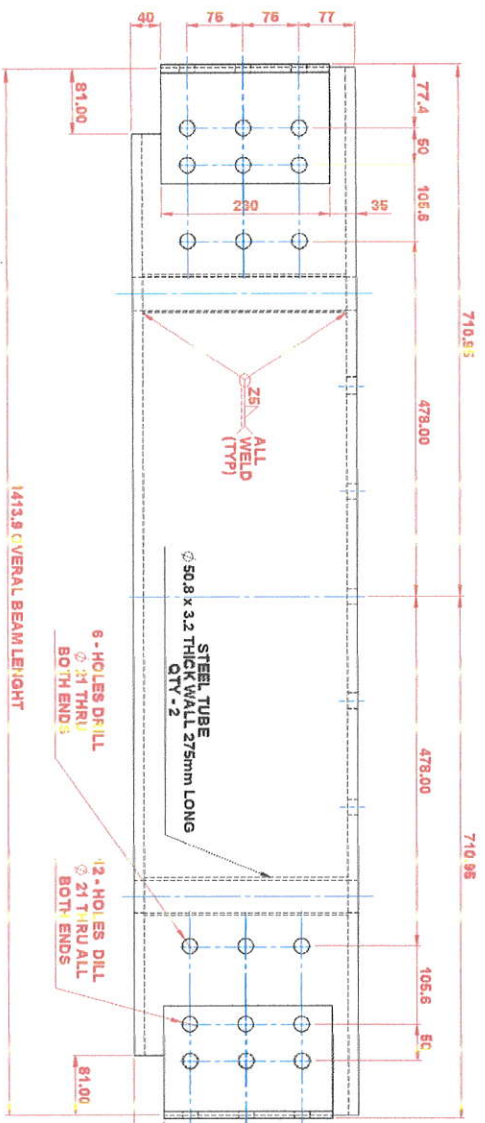


16 - HOLES DRILL Ø 21 THRU ALL DRILLINGS BOTH ENDS



NOTES:  
MATERIAL: 356mm x 177mm x 57KG/M UNIVERSAL BEAM

NO.	DESCRIPTION	QTY	UNIT	REMARKS
1	UNIVERSAL BEAM	1	M	
2	CLEAT	4	M	



NOTES:  
MATERIAL  
305mm x 89mm x 41.69KG/M RSC

ALL DIMENSIONS ARE IN MILLIMETERS UNLESS OTHERWISE SPECIFIED

PRODUCT CODE

<p>DESIGNATION: 152.40 x 76.20 x 6.40 RSC</p> <p>SYMBOL: 152.40 x 76.20 x 6.40 RSC</p>		<p>QUANTITY: 1</p> <p>UNIT: METRE</p>	
<p>DESCRIPTION: CHANNEL SECTION</p> <p>EXAMPLE: CHANNEL SECTION</p>		<p>STATUS: 1</p> <p>DATE: 14/07/2022</p>	
<p>APPROVED: [Signature]</p> <p>DATE: 14/07/2022</p>		<p>REVISION: 1</p> <p>DATE: 14/07/2022</p>	

**CARTER BROTHERS (ROCHDALE) LTD.**  
 UNIT 30, STAKEHILL INDUSTRIAL ESTATE, MIDDLETON  
 MANCHESTER, M24 2RW, ENGLAND

141 671 006 (Fax) 01761 423560 email info@cb-manchester.com

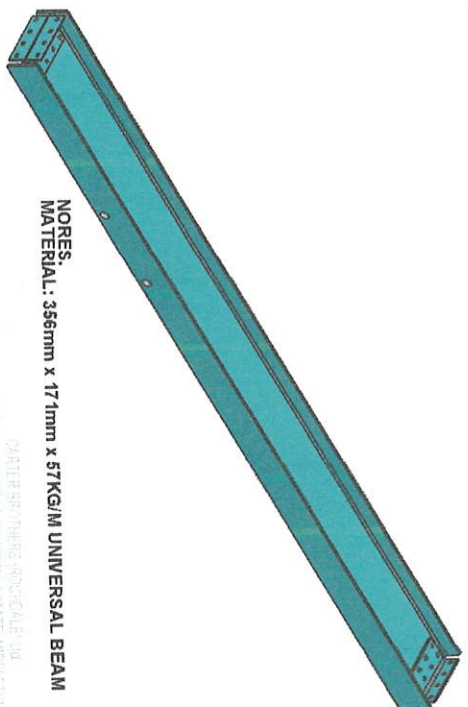
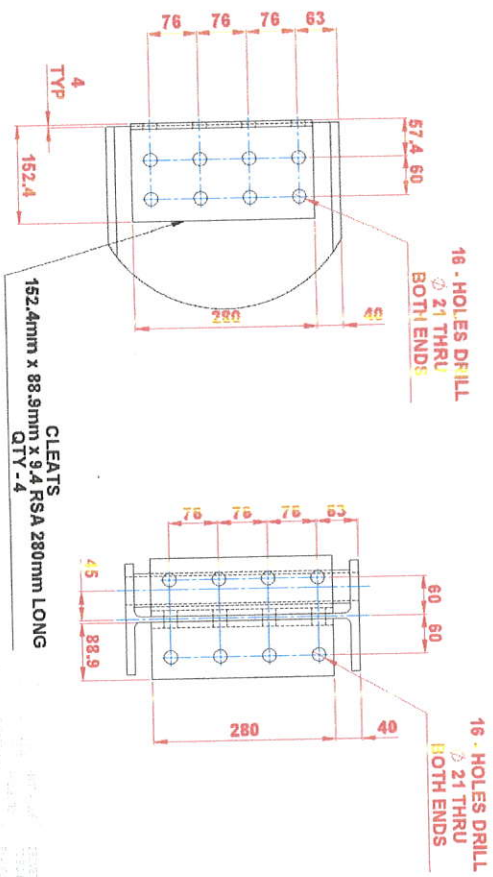
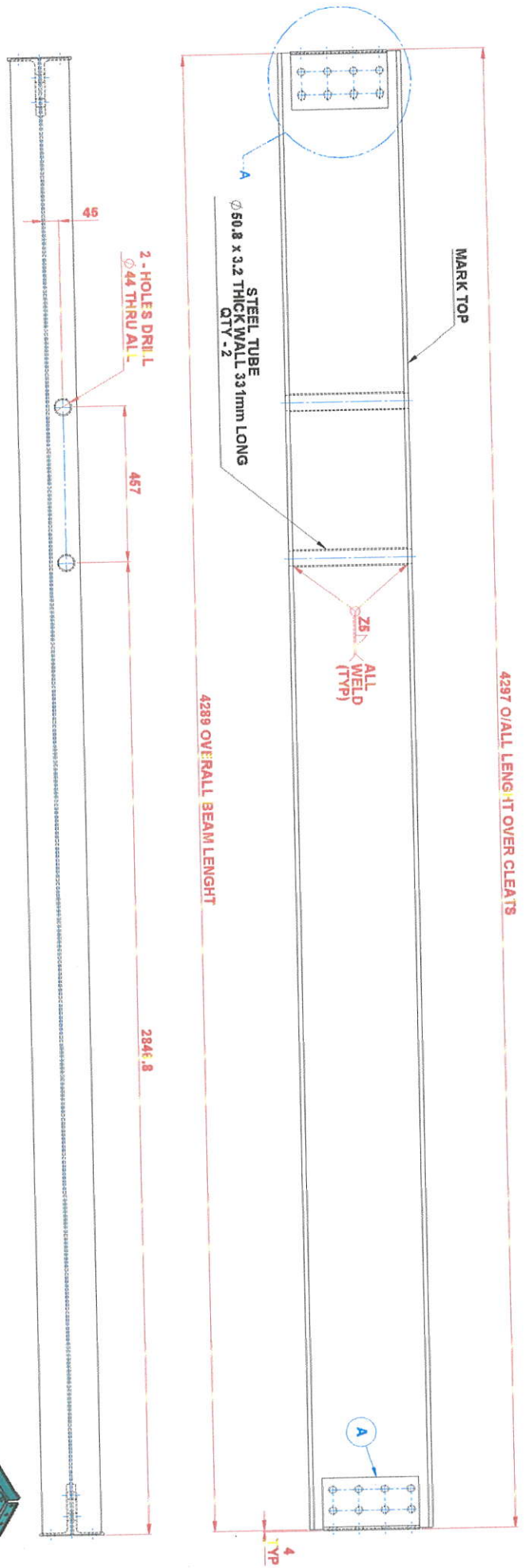
FOR QUOTATIONS AND ORDERS PLEASE CONTACT OUR SALES DEPARTMENT ON 01761 423560. ALL QUOTATIONS AND ORDERS ARE VALID FOR 30 DAYS FROM THE DATE OF ISSUANCE. DELIVERY IS SUBJECT TO AVAILABILITY AND WE RESERVE THE RIGHT TO SUBSTITUTE EQUIVALENTS WITHOUT NOTICE.

MATERIAL: MILD STEEL  
 MACHINE: CRANE

DATE: 14/07/2022  
 DRAWN: [Name]  
 CHECKED: [Name]  
 APPD: [Name]

TITLE: CROSS CHANNEL - TYPE A (REAR)  
 SHEET: 1 OF 1

029D14633



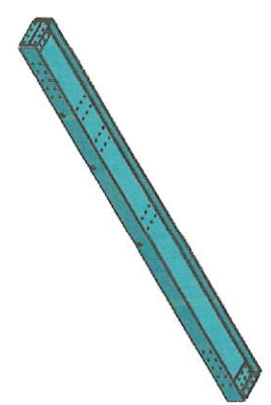
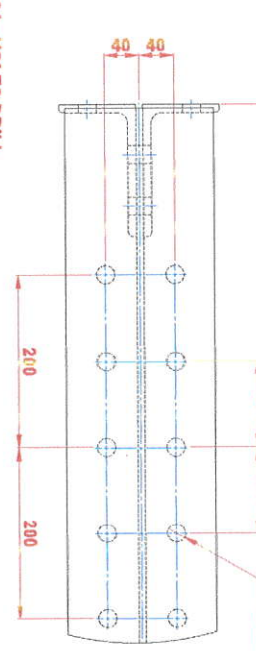
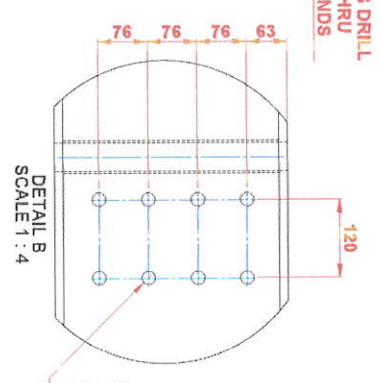
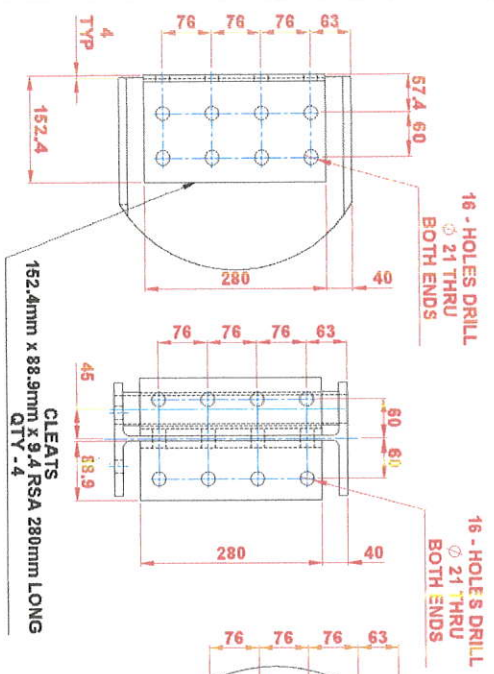
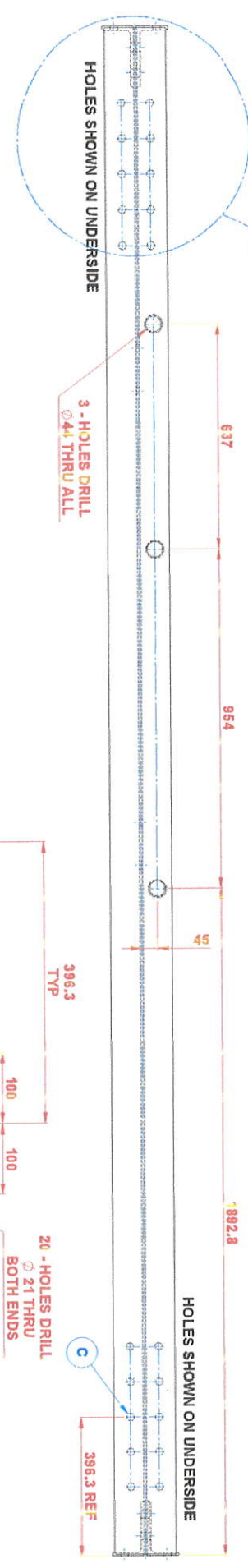
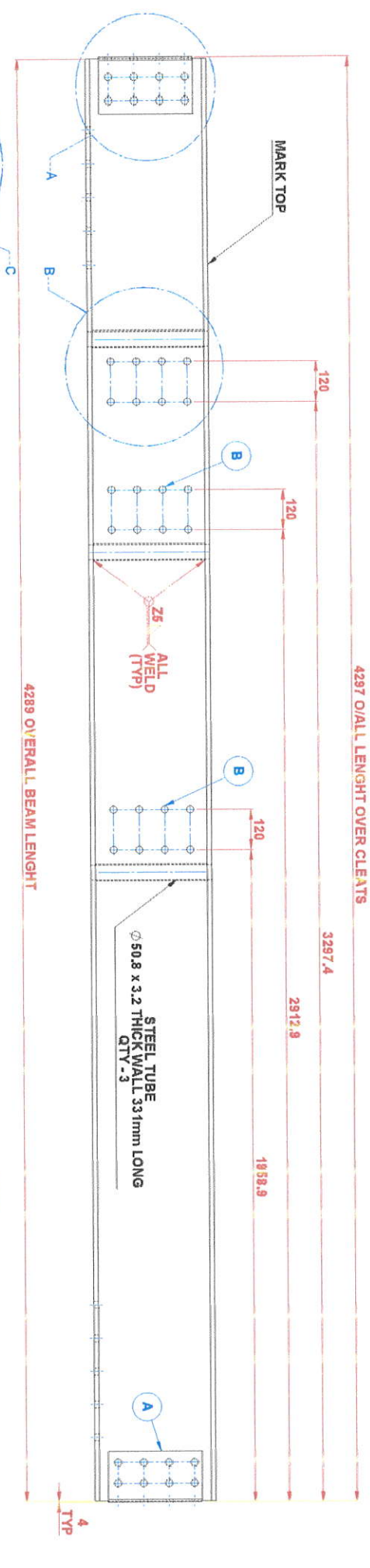
DETAIL A  
 SCALE 1:4

NO.	DESCRIPTION	QTY	UNIT	REMARKS
1	STEEL TUBE	2	PCS	
2	CLEATS	4	PCS	
3	UNIVERSAL BEAM	1	PCS	

UNIT: 35 STAKEHILL INDUSTRIAL ESTATE, WILLOWTON  
 MANUFACTURED BY: WAZAWAY ENGINEERING

PRODUCT CODE: 029D14624

CROSS BEAM - TYPE E



NOTES:  
MATERIAL: 356mm x 171mm x 57KG/M UNIVERSAL BEAM

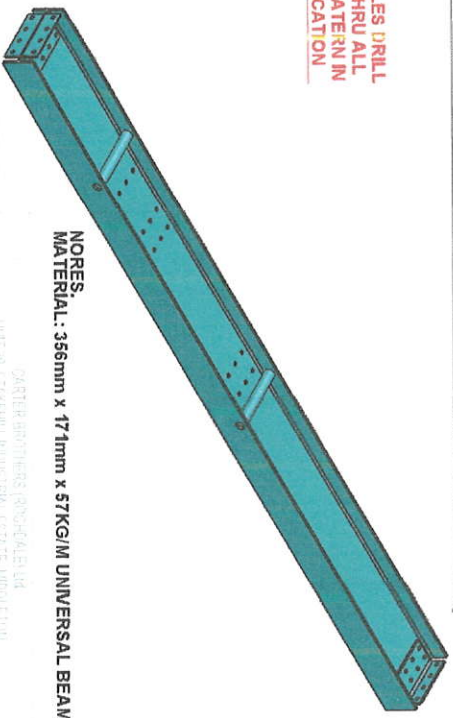
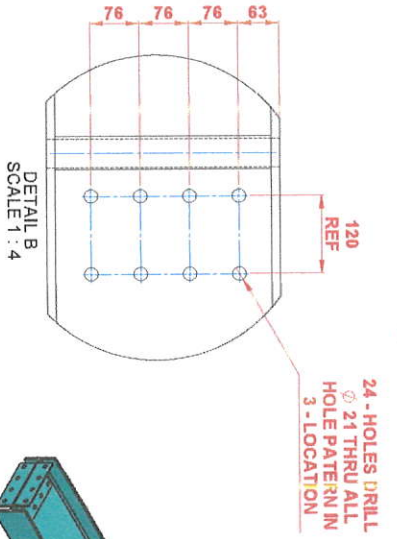
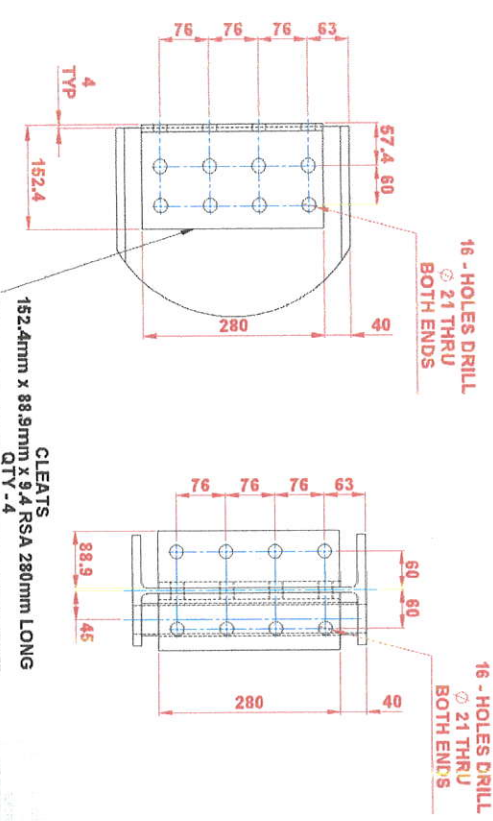
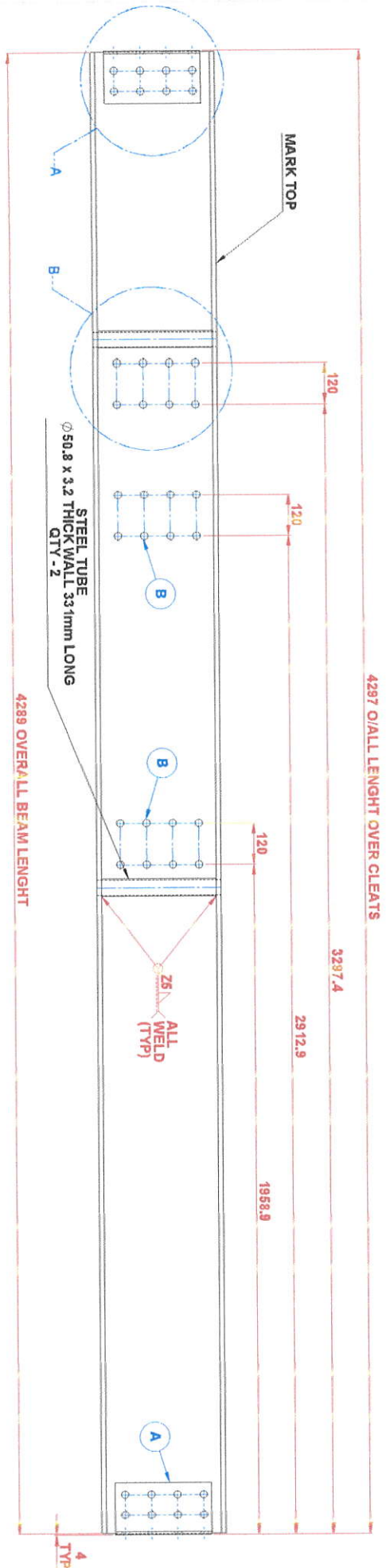
DETAIL A  
SCALE 1 : 4

DETAIL B  
SCALE 1 : 4

DETAIL C  
SCALE 1 : 3

CLEATS  
152.4mm x 88.9mm x 9.4 RSA 280mm LONG  
QTY - 4

NO.	DESCRIPTION	QTY	UNIT
1	STEEL TUBE 50.8 x 3.2 THICK WALL 331mm LONG	3	M
2	CLEAT 152.4mm x 88.9mm x 9.4 RSA 280mm LONG	4	M



DETAIL A  
SCALE 1 : 4

DETAIL B  
SCALE 1 : 4

ALL DIMENSIONS IN MILLIMETERS UNLESS OTHERWISE SPECIFIED

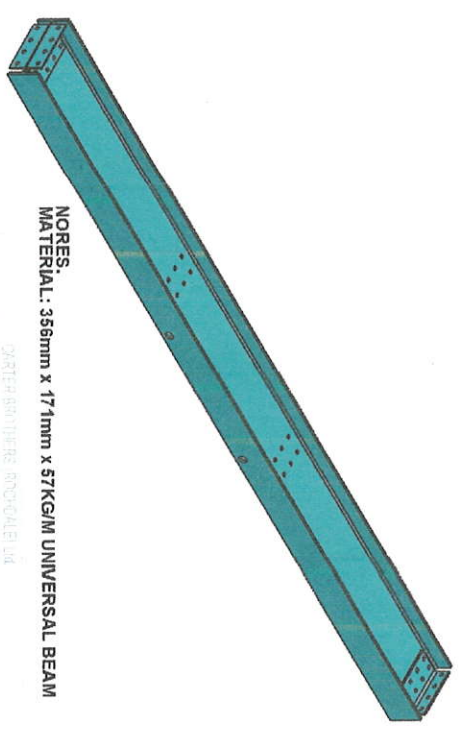
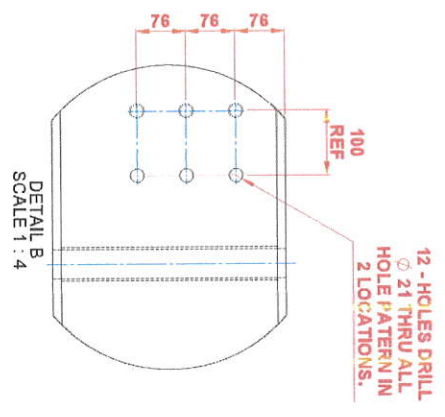
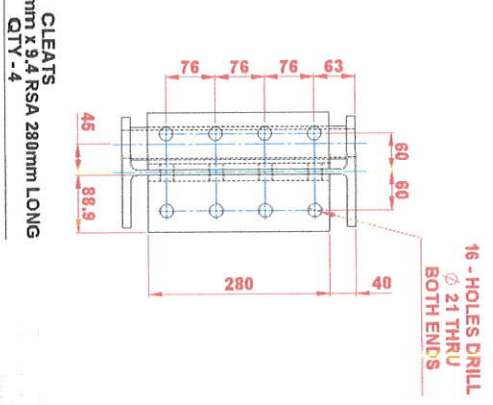
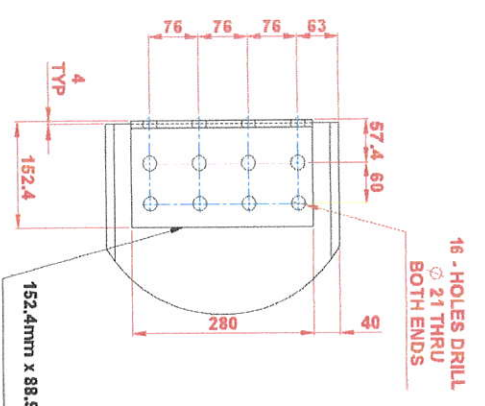
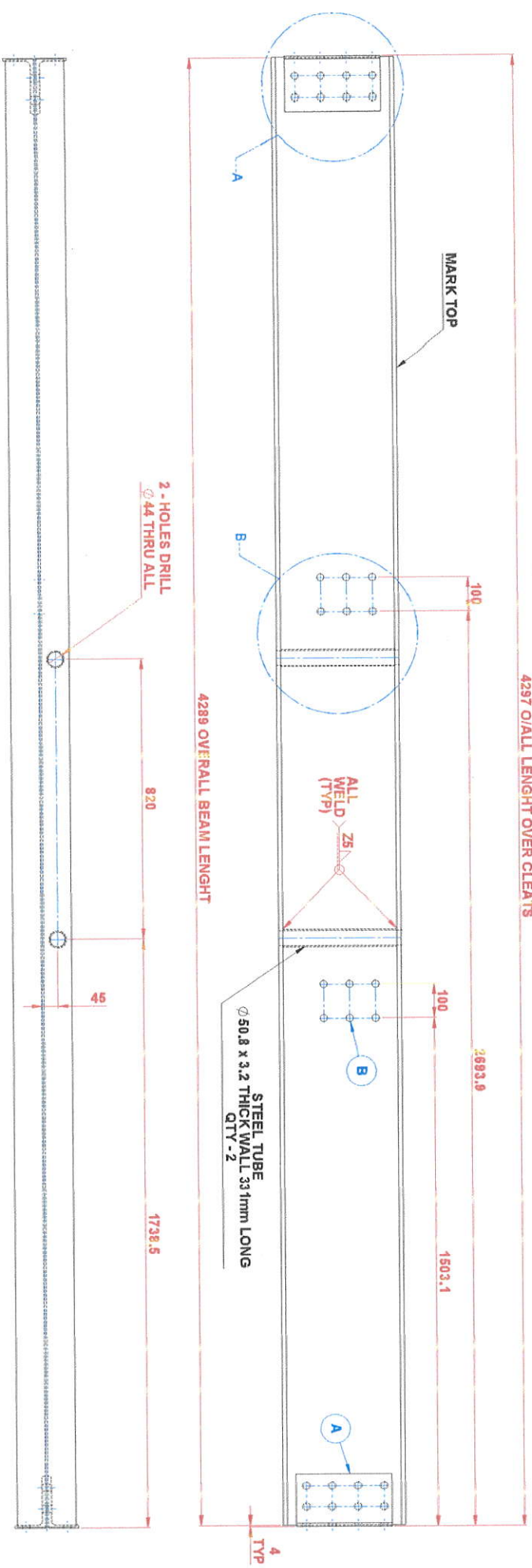
NO.	DESCRIPTION	QTY	UNIT
1	STEEL TUBE	2	M
2	CLEAT	4	M

PROJECT CODE

DATE

029D14622

4297 OALL LENGHT OVER CLEATS

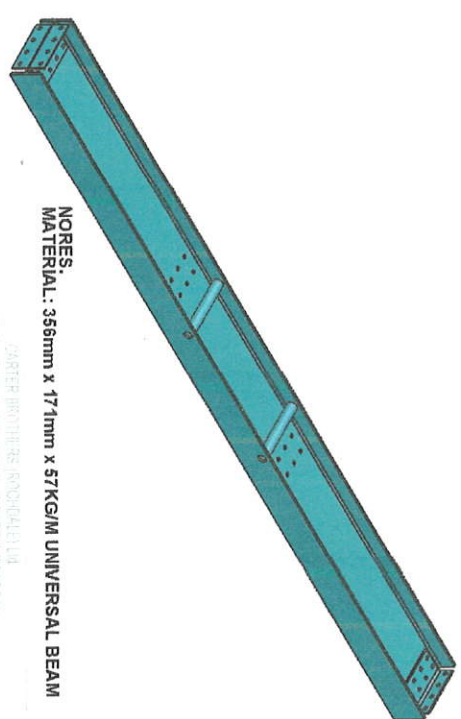
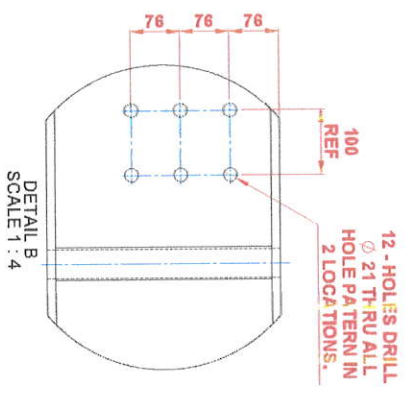
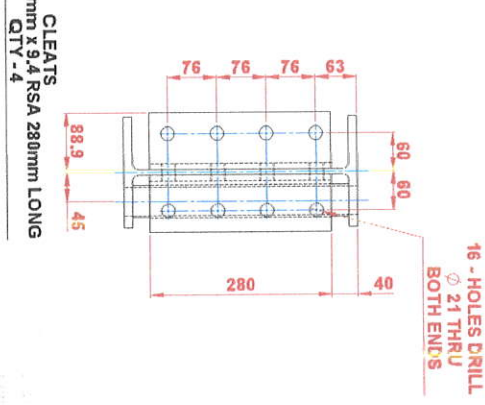
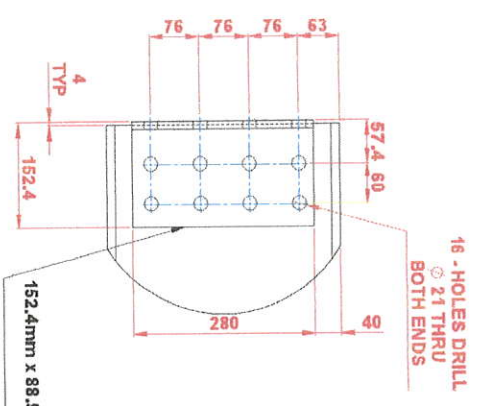
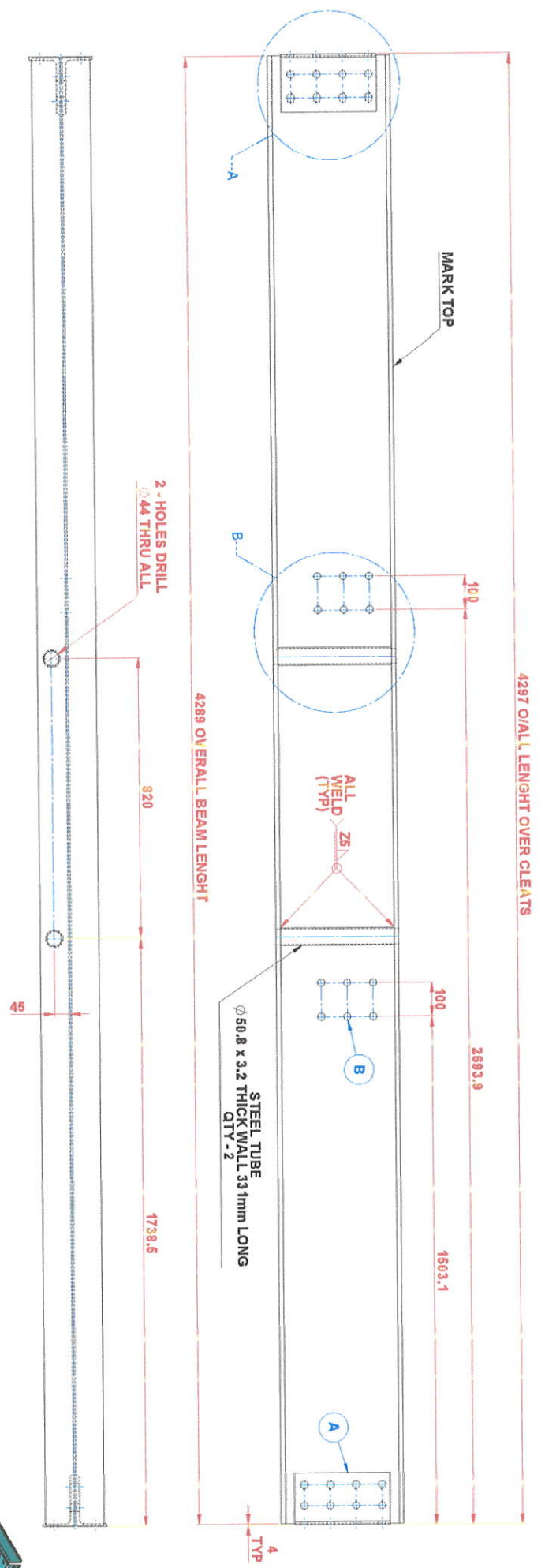


DETAIL A  
SCALE 1 : 4

DETAIL B  
SCALE 1 : 4

CLEATS  
152.4mm x 58.9mm x 9.4 RSA 280mm LONG  
QTY - 4

PROJECT NO.	029D14621
DATE	10/10/2010
DESIGNER	...
CHECKED	...
APPROVED	...
PRODUCT CODE	...
UNIT OF MEASURE	MILLIMETERS
SCALE	1:4
PROJECT NAME	...
CLIENT	...
LOCATION	...
DESCRIPTION	...
REVISIONS	...
DATE	...
BY	...
CHECKED	...
APPROVED	...
PROJECT NO.	029D14621
DATE	10/10/2010
DESIGNER	...
CHECKED	...
APPROVED	...
PRODUCT CODE	...
UNIT OF MEASURE	MILLIMETERS
SCALE	1:4
PROJECT NAME	...
CLIENT	...
LOCATION	...
DESCRIPTION	...
REVISIONS	...
DATE	...
BY	...
CHECKED	...
APPROVED	...



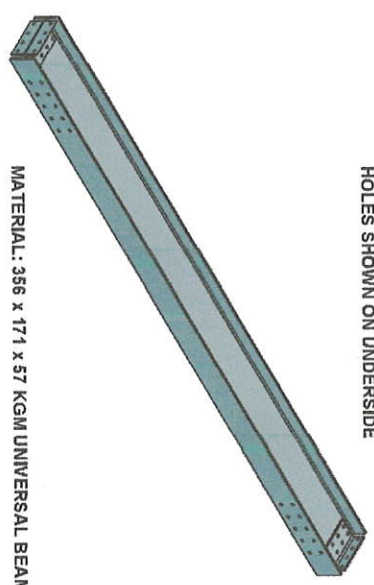
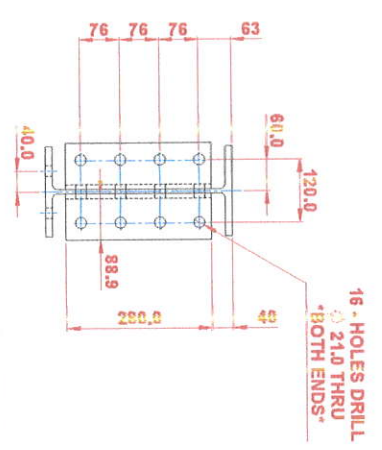
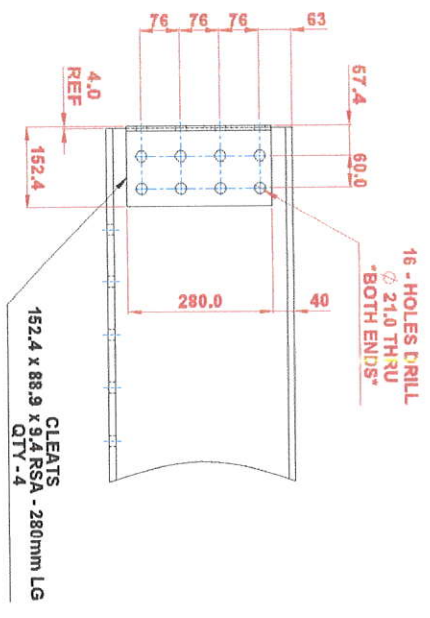
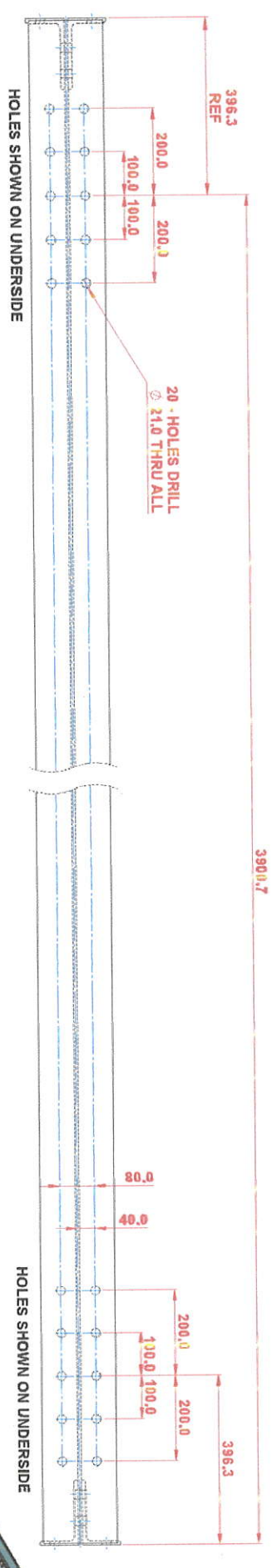
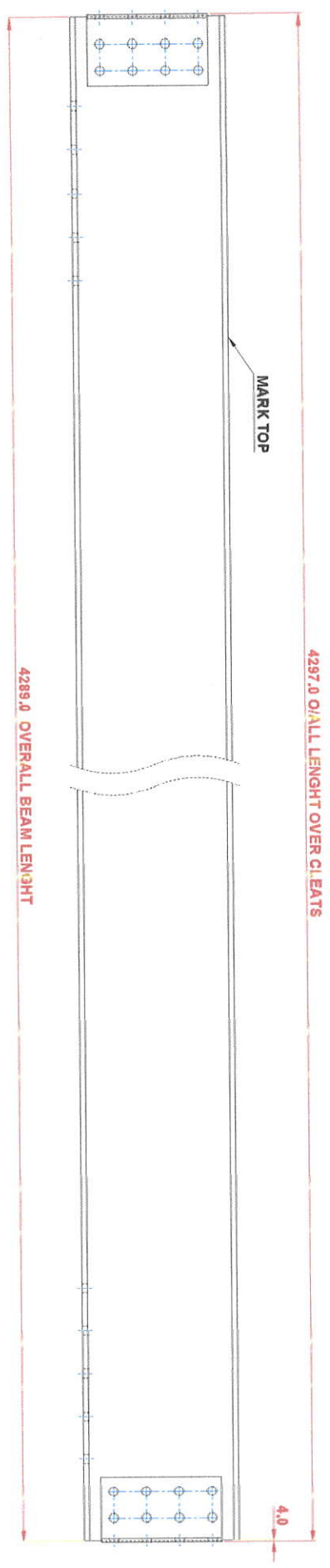
DETAIL A  
SCALE 1 : 4

DETAIL B  
SCALE 1 : 4

CLEATS  
152.4mm x 88.9mm x 9.4 RSA 280mm LONG  
QTY - 4

PRODUCT CODE

MANUFACTURER: WZL/WSA/RS/AND



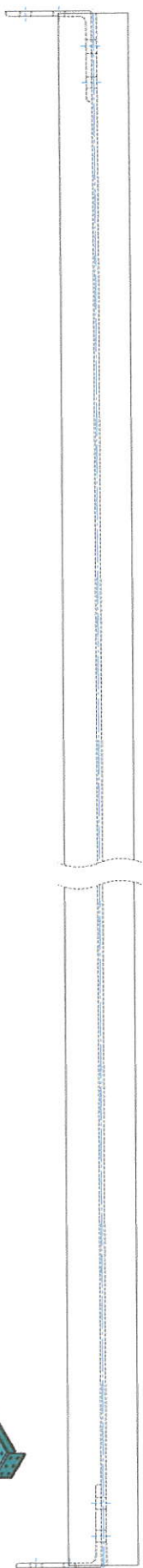
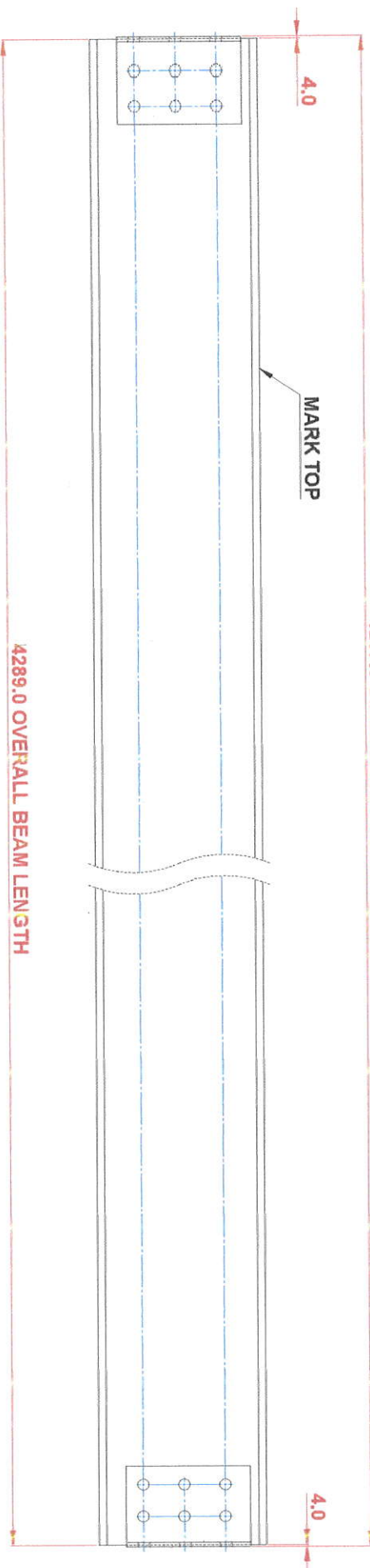
NO.	DESCRIPTION	QTY	UNIT	REMARKS
1	356 x 171 x 57 KGM UNIVERSAL BEAM	1	M	
2	152.4 x 88.9 x 9.4 PSA - 280mm LG CLEATS	4	PCS	

DATE: 2024-08-15  
 DRAWN BY: [Name]  
 CHECKED BY: [Name]  
 PROJECT CODE: [Code]

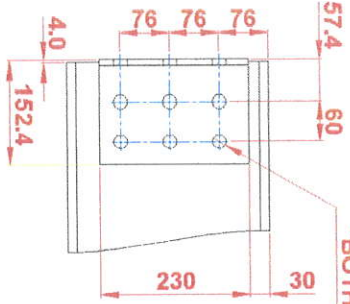
029D14619 A



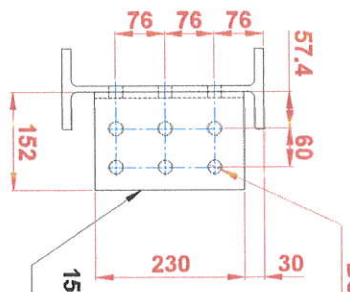
4297.0 O'ALL LENGHT OVER CLEATS



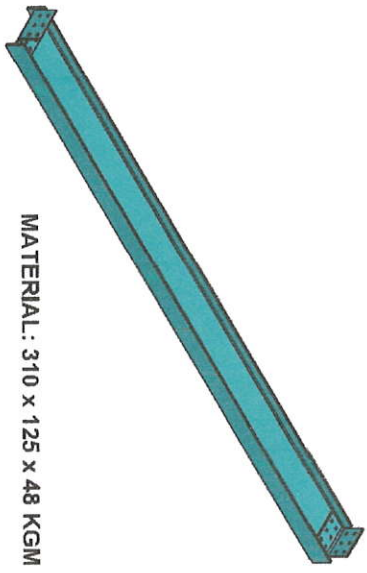
12 - HOLES DRILL  
Ø 21 THRU  
\*BOTH ENDS\*



12 - HOLES DRILL  
Ø 21 THRU  
\*BOTH ENDS\*



152.4mm x 152.4mm x 9.4 RSA 230mm LONG  
CLEATS  
QTY - 2



MATERIAL: 310 x 125 x 48 KGM UNIVERSAL BEAM

NO	QTY	DESCRIPTION	UNIT	REMARKS
1	1	310 x 125 x 48 KGM UNIVERSAL BEAM	M	
2	2	152.4mm x 152.4mm x 9.4 RSA 230mm LONG CLEATS	M	

PROJECT CODE: \_\_\_\_\_

DATE: \_\_\_\_\_

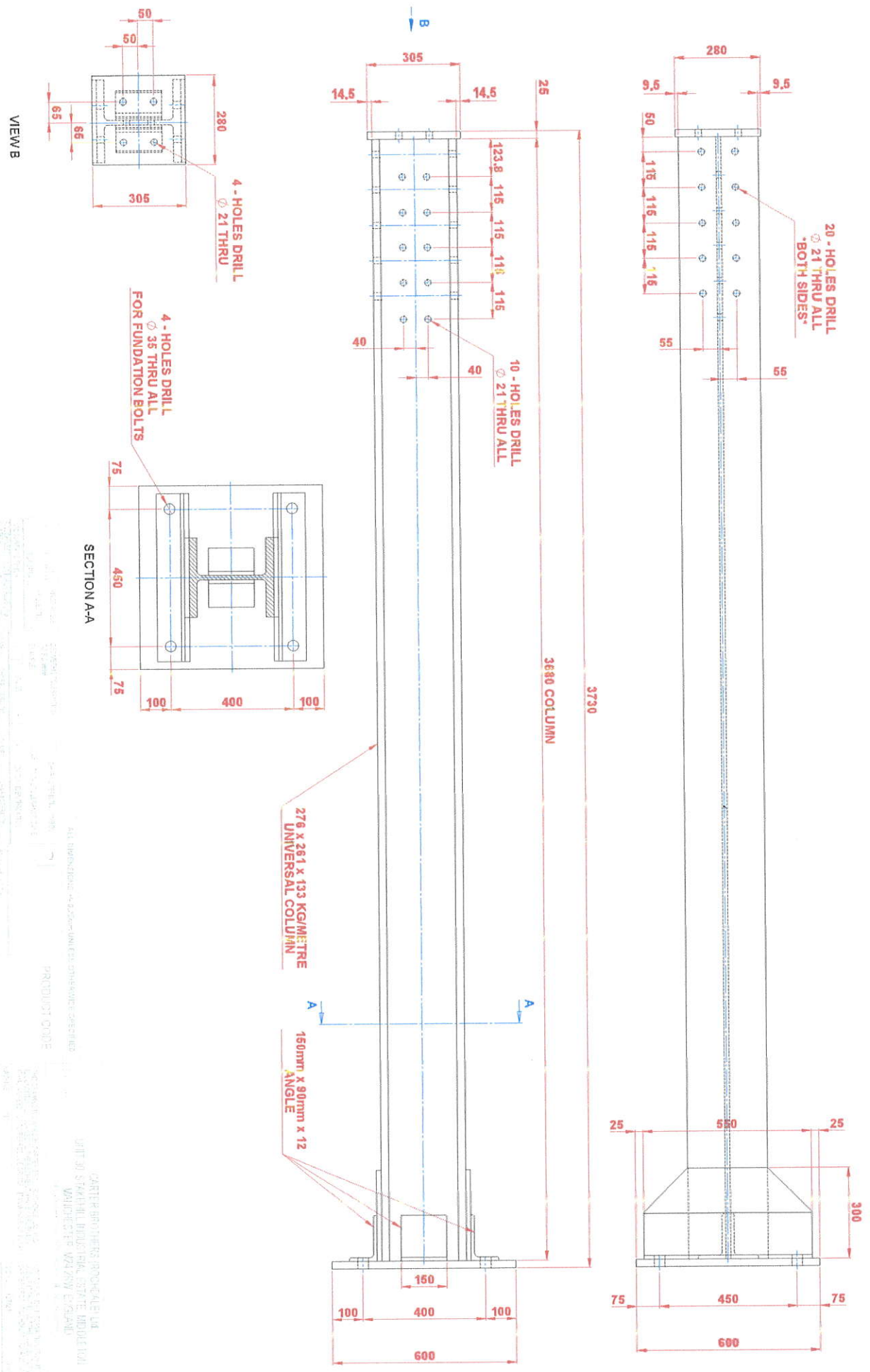
UNITS: METRIC

SCALE: 1:1

END CROSS BEAM

029D14618

A



ALL DIMENSIONS IN MILLIMETERS UNLESS OTHERWISE SPECIFIED

PRODUCT CODE

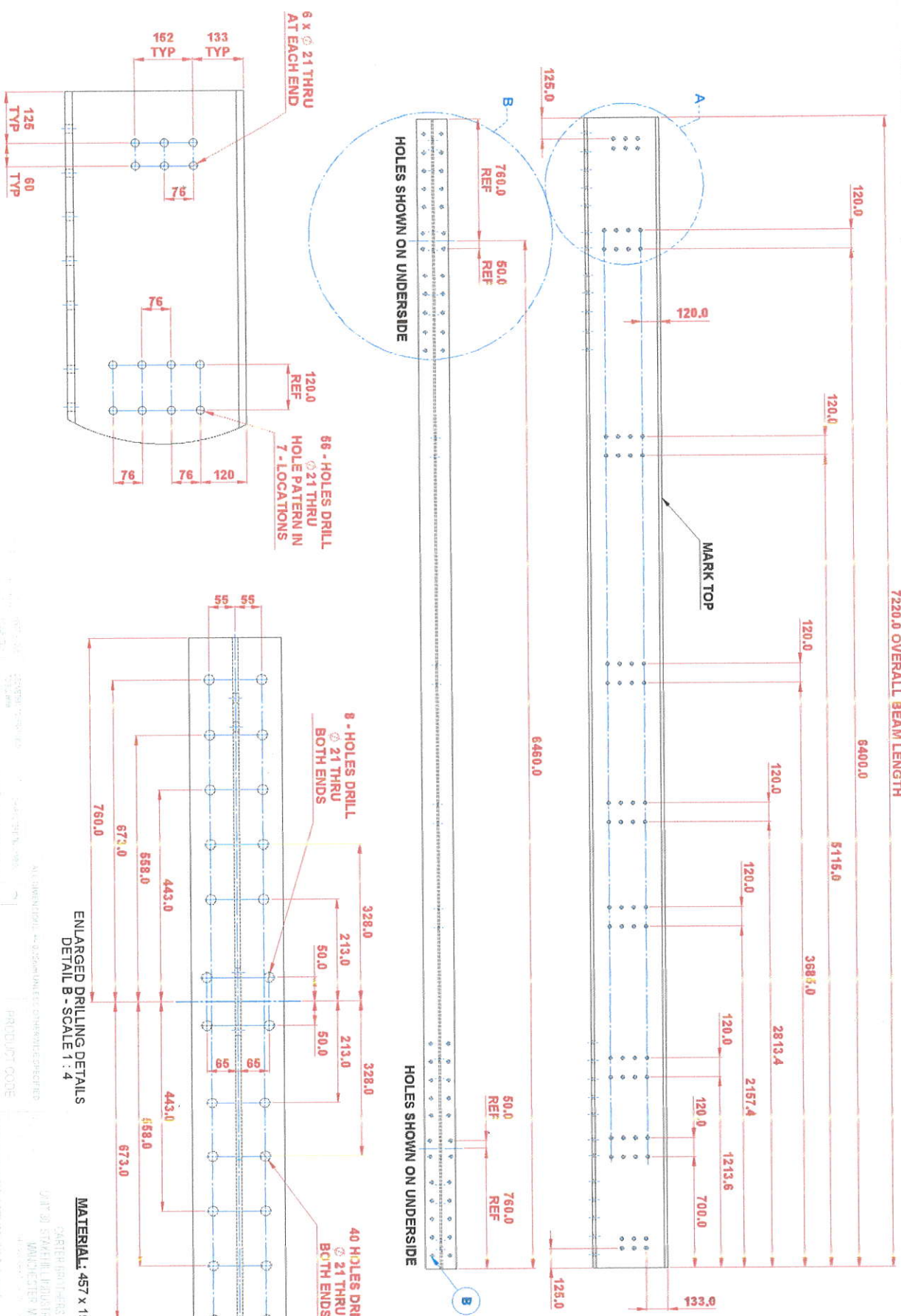
CARTER BROTHERS, INCORPORATED  
 UNIT 30, STAKEHILL INDUSTRIAL ESTATE, RIDGEMOUNT  
 MANICHESTER, WIRRAL, CHESHIRE, ENGLAND

NO.	REV.	DATE	BY	CHKD.	ISSUED FOR
1					STANDARD SPECIFICATION

029D14616

A

7220.0 OVERALL BEAM LENGTH



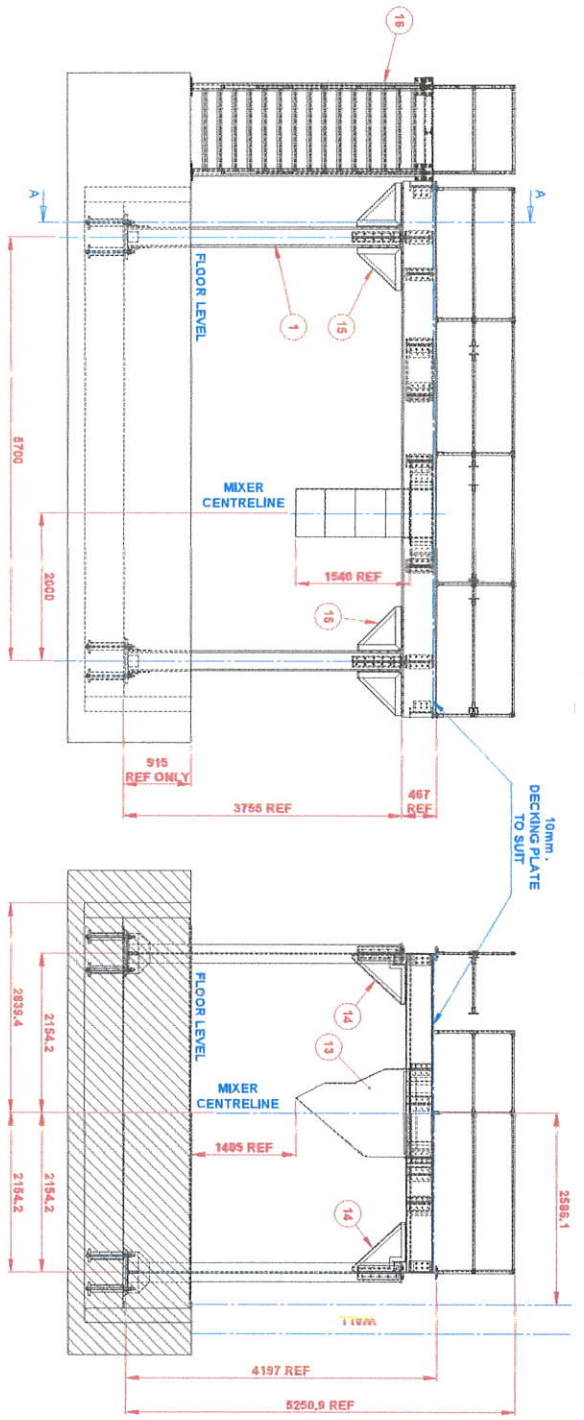
ENLARGED DRILLING DETAILS  
DETAIL A - SCALE 1 : 5

ENLARGED DRILLING DETAILS  
DETAIL B - SCALE 1 : 4

**MATERIAL:** 457 x 193 x 98 KGM UNIVERSAL BEAM

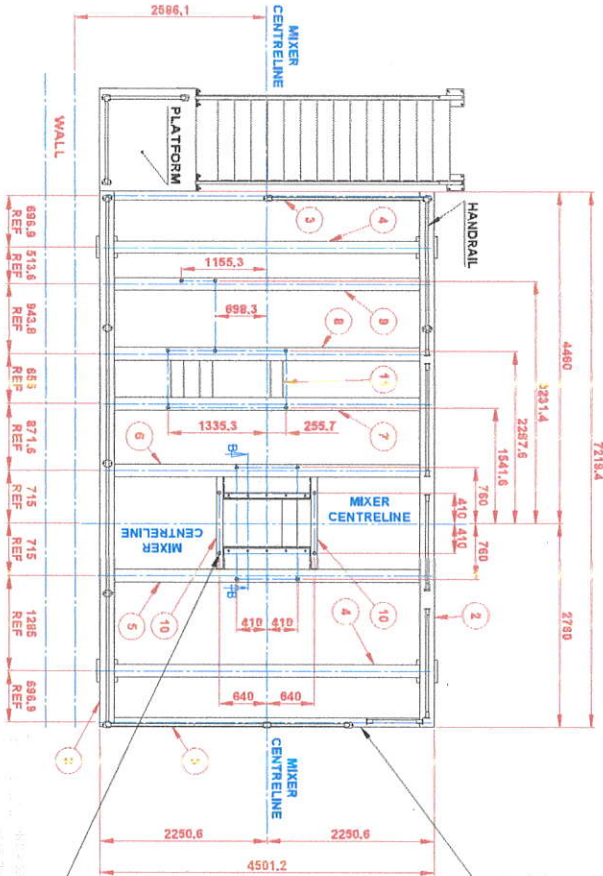
ALL DIMENSIONS IN MILLIMETERS UNLESS OTHERWISE SPECIFIED  
PRODUCT CODE

STARTER RAILINGS (RONDAL) LTD  
UNIT 30 STAVELL INDUSTRIAL ESTATE MADRINGTON  
MANCHESTER WA16 9NU U.K.  
029D14617



SECTION A-A

SECTION B-B  
SCALE: 1:15



WELD MILD STEEL BLOCKS TO THE END CROSS BEAMS BEFORE THE CONCRETE IS POURED - TO ALLOW FOR FINING THE HANDRAILS.

NOTES:

1. ALL HARDWARE (GENERALLY M20 AND M24) TO BE HIGH TENSILE, I.E. BOLTS TO BE GRADE 8.8 AND NUTS TO BE GRADE 8.0.
2. TAPER WASHERS TO BE USED WITH TAPER FLANGES.
3. HANDRAIL AND STILLAGE STAIRCASE ASSEMBLY SHOWN FOR REPRESENTATION ONLY.
- TO BE MADE BY CUSTOMER TO SUIT.

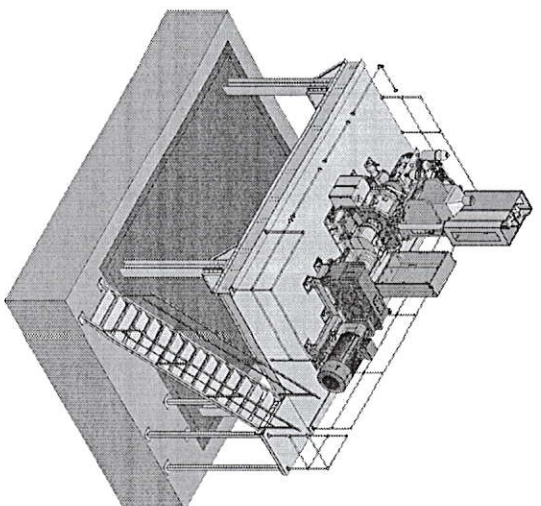
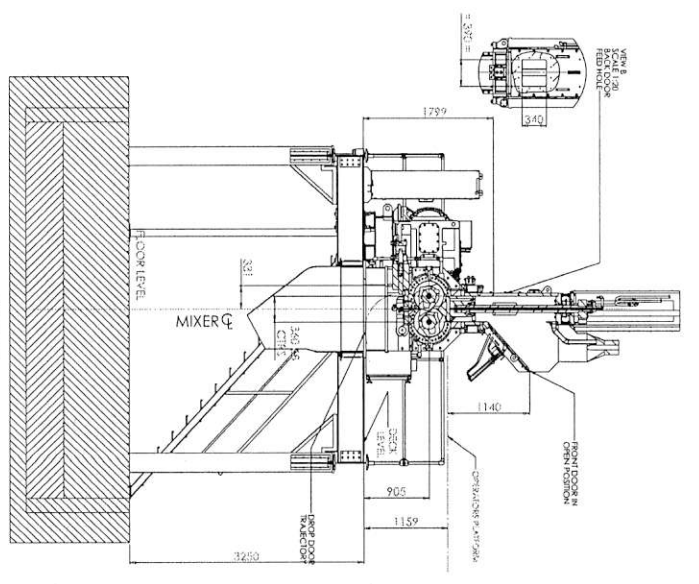
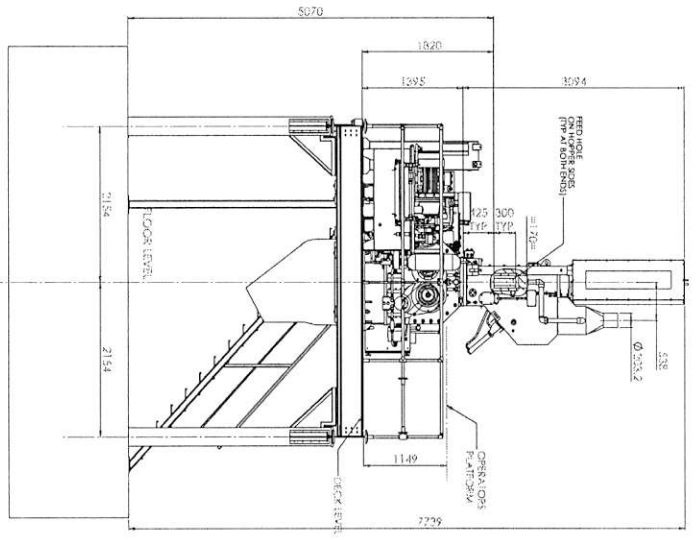
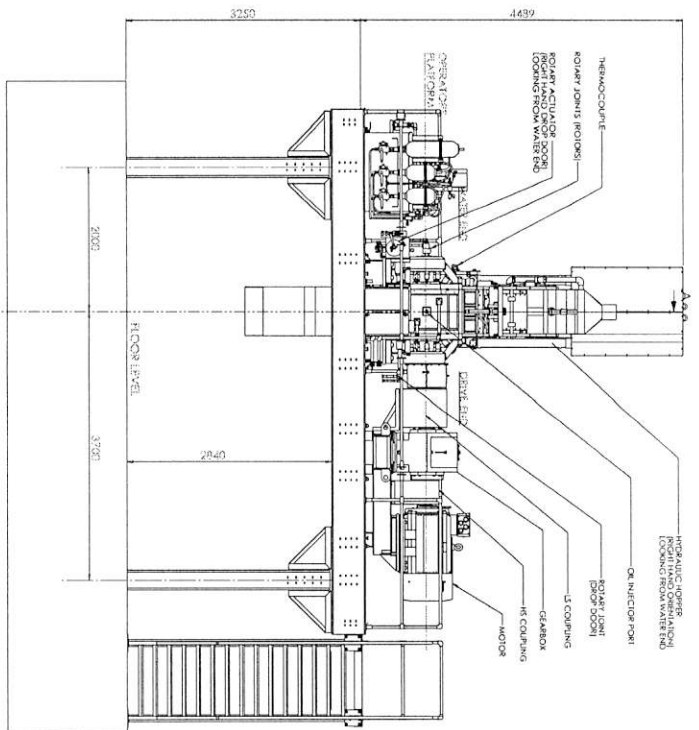
18-OFF BOLT TUBES FROM STEEL TUBE 80.8 O.D. X 3.2mm WALL, SET FLUSH WITH BOTTOM OF CROSSBEAMS AND WELDED TO BOTH TOP AND BOTTOM FLANGES AS SHOWN.  
IT IS IMPORTANT THAT ALL TUBES ARE PERPENDICULAR WITH THE TOP FACES OF THE CROSSBEAMS IN 2 PLANES SO THEY REMAIN PLUMB WHEN THE STILLAGE DECK IS SET LEVEL.

ITEM NO.	PART NUMBER	DESCRIPTION	QTY.
1	029014616	STILLAGE STAIRCHION	4
2	029014617	MAIN BEAM (L & R)	2
3	029014618	END CROSS BEAM	2
4	029014619	CROSS BEAM - TYPE A	2
5	029014620	CROSS BEAM - TYPE B	1
6	029014621	CROSS BEAM - TYPE C	1
7	029014622	CROSS BEAM - TYPE D	1
8	029014623	CROSS BEAM - TYPE E	1
9	029014624	CROSS BEAM - TYPE F	1
10	029014625	CROSS CHANNEL - TYPE A (BEAM)	2
11	029014626	CROSS CHANNEL - TYPE B	2
12	029014627	COVER PLATES (DUP'R HOLE)	2
13	029014628	DUP'R CHUTE	1
14	M81222	CROSS BEAM BRACKETS	4
15	M81223	MAIN BEAM BRACKETS	8
16		STILLAGE STAIRCASE ASSEMBLY	1
17		HANDRAIL ASSEMBLY	1

PARTS BRACKETS, ROD, GALVANIZED  
UNIT 30, STANWELL INDUSTRIAL ESTATE, WOODLTON  
WANDERER, WA 6000, AUSTRALIA

PRODUCT CODE

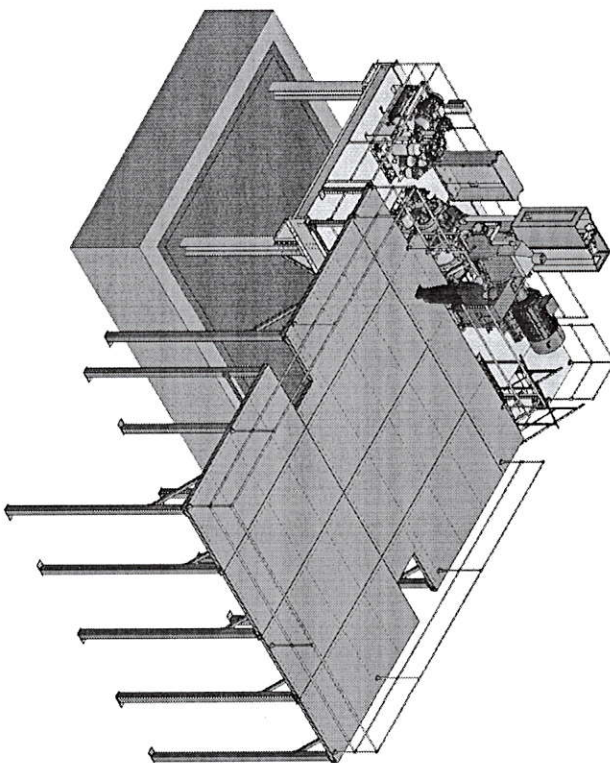
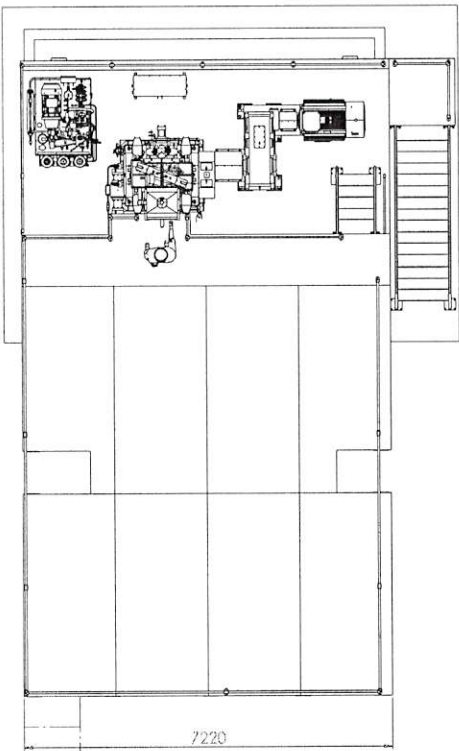
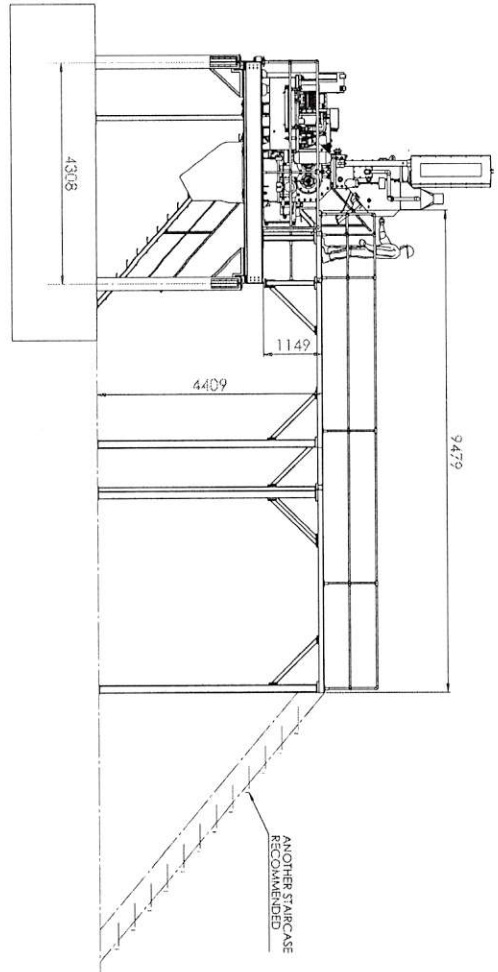
STILLAGE & PLATFORM  
DETAILS



ITEM	WEIGHT (KG)
MIXER + BEARING	7500
HOPPER	2900
GEARBOX	4100
MOTOR	1300
COUPLINGS	500
HPU	1500
LUBR UNIT	500

OVERALL LENGTH = 1.53 METRE (LOAD)  
 NOTES:  
 RIGHT HAND HOPPER ORIENTATION (LOOKING FROM WATER END)  
 RIGHT HAND HOPPER ORIENTATION (LOOKING FROM WATER END)  
 SEE DRG 0904/4477 FOR HOPPER ORIENTATION

NO.	REV.	DATE	BY	CHKD.	DESCRIPTION
1	0				ISSUED FOR FABRICATION
2	1				REVISED TO INCLUDE CHANGES
3	2				REVISED TO INCLUDE CHANGES
4	3				REVISED TO INCLUDE CHANGES
5	4				REVISED TO INCLUDE CHANGES
6	5				REVISED TO INCLUDE CHANGES
7	6				REVISED TO INCLUDE CHANGES
8	7				REVISED TO INCLUDE CHANGES
9	8				REVISED TO INCLUDE CHANGES
10	9				REVISED TO INCLUDE CHANGES
11	10				REVISED TO INCLUDE CHANGES
12	11				REVISED TO INCLUDE CHANGES
13	12				REVISED TO INCLUDE CHANGES
14	13				REVISED TO INCLUDE CHANGES
15	14				REVISED TO INCLUDE CHANGES
16	15				REVISED TO INCLUDE CHANGES
17	16				REVISED TO INCLUDE CHANGES
18	17				REVISED TO INCLUDE CHANGES
19	18				REVISED TO INCLUDE CHANGES
20	19				REVISED TO INCLUDE CHANGES
21	20				REVISED TO INCLUDE CHANGES
22	21				REVISED TO INCLUDE CHANGES
23	22				REVISED TO INCLUDE CHANGES
24	23				REVISED TO INCLUDE CHANGES
25	24				REVISED TO INCLUDE CHANGES
26	25				REVISED TO INCLUDE CHANGES
27	26				REVISED TO INCLUDE CHANGES
28	27				REVISED TO INCLUDE CHANGES
29	28				REVISED TO INCLUDE CHANGES
30	29				REVISED TO INCLUDE CHANGES
31	30				REVISED TO INCLUDE CHANGES
32	31				REVISED TO INCLUDE CHANGES
33	32				REVISED TO INCLUDE CHANGES
34	33				REVISED TO INCLUDE CHANGES
35	34				REVISED TO INCLUDE CHANGES
36	35				REVISED TO INCLUDE CHANGES
37	36				REVISED TO INCLUDE CHANGES
38	37				REVISED TO INCLUDE CHANGES
39	38				REVISED TO INCLUDE CHANGES
40	39				REVISED TO INCLUDE CHANGES
41	40				REVISED TO INCLUDE CHANGES
42	41				REVISED TO INCLUDE CHANGES
43	42				REVISED TO INCLUDE CHANGES
44	43				REVISED TO INCLUDE CHANGES
45	44				REVISED TO INCLUDE CHANGES
46	45				REVISED TO INCLUDE CHANGES
47	46				REVISED TO INCLUDE CHANGES
48	47				REVISED TO INCLUDE CHANGES
49	48				REVISED TO INCLUDE CHANGES
50	49				REVISED TO INCLUDE CHANGES
51	50				REVISED TO INCLUDE CHANGES
52	51				REVISED TO INCLUDE CHANGES
53	52				REVISED TO INCLUDE CHANGES
54	53				REVISED TO INCLUDE CHANGES
55	54				REVISED TO INCLUDE CHANGES
56	55				REVISED TO INCLUDE CHANGES
57	56				REVISED TO INCLUDE CHANGES
58	57				REVISED TO INCLUDE CHANGES
59	58				REVISED TO INCLUDE CHANGES
60	59				REVISED TO INCLUDE CHANGES
61	60				REVISED TO INCLUDE CHANGES
62	61				REVISED TO INCLUDE CHANGES
63	62				REVISED TO INCLUDE CHANGES
64	63				REVISED TO INCLUDE CHANGES
65	64				REVISED TO INCLUDE CHANGES
66	65				REVISED TO INCLUDE CHANGES
67	66				REVISED TO INCLUDE CHANGES
68	67				REVISED TO INCLUDE CHANGES
69	68				REVISED TO INCLUDE CHANGES
70	69				REVISED TO INCLUDE CHANGES
71	70				REVISED TO INCLUDE CHANGES
72	71				REVISED TO INCLUDE CHANGES
73	72				REVISED TO INCLUDE CHANGES
74	73				REVISED TO INCLUDE CHANGES
75	74				REVISED TO INCLUDE CHANGES
76	75				REVISED TO INCLUDE CHANGES
77	76				REVISED TO INCLUDE CHANGES
78	77				REVISED TO INCLUDE CHANGES
79	78				REVISED TO INCLUDE CHANGES
80	79				REVISED TO INCLUDE CHANGES
81	80				REVISED TO INCLUDE CHANGES
82	81				REVISED TO INCLUDE CHANGES
83	82				REVISED TO INCLUDE CHANGES
84	83				REVISED TO INCLUDE CHANGES
85	84				REVISED TO INCLUDE CHANGES
86	85				REVISED TO INCLUDE CHANGES
87	86				REVISED TO INCLUDE CHANGES
88	87				REVISED TO INCLUDE CHANGES
89	88				REVISED TO INCLUDE CHANGES
90	89				REVISED TO INCLUDE CHANGES
91	90				REVISED TO INCLUDE CHANGES
92	91				REVISED TO INCLUDE CHANGES
93	92				REVISED TO INCLUDE CHANGES
94	93				REVISED TO INCLUDE CHANGES
95	94				REVISED TO INCLUDE CHANGES
96	95				REVISED TO INCLUDE CHANGES
97	96				REVISED TO INCLUDE CHANGES
98	97				REVISED TO INCLUDE CHANGES
99	98				REVISED TO INCLUDE CHANGES
100	99				REVISED TO INCLUDE CHANGES



1:100 1" = 10'-0"	1:100 1" = 10'-0"	1:100 1" = 10'-0"	1:100 1" = 10'-0"
1:100 1" = 10'-0"	1:100 1" = 10'-0"	1:100 1" = 10'-0"	1:100 1" = 10'-0"
1:100 1" = 10'-0"	1:100 1" = 10'-0"	1:100 1" = 10'-0"	1:100 1" = 10'-0"
1:100 1" = 10'-0"	1:100 1" = 10'-0"	1:100 1" = 10'-0"	1:100 1" = 10'-0"
1:100 1" = 10'-0"	1:100 1" = 10'-0"	1:100 1" = 10'-0"	1:100 1" = 10'-0"
1:100 1" = 10'-0"	1:100 1" = 10'-0"	1:100 1" = 10'-0"	1:100 1" = 10'-0"
1:100 1" = 10'-0"	1:100 1" = 10'-0"	1:100 1" = 10'-0"	1:100 1" = 10'-0"
1:100 1" = 10'-0"	1:100 1" = 10'-0"	1:100 1" = 10'-0"	1:100 1" = 10'-0"
1:100 1" = 10'-0"	1:100 1" = 10'-0"	1:100 1" = 10'-0"	1:100 1" = 10'-0"

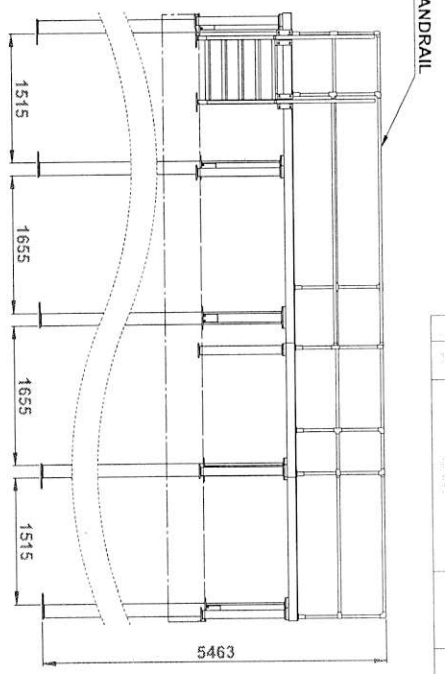
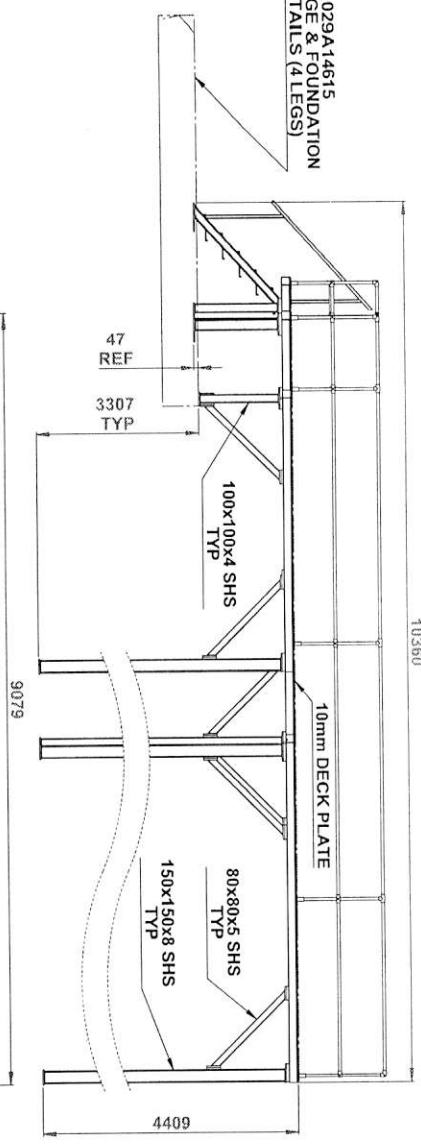
1:100 1" = 10'-0"	1:100 1" = 10'-0"	1:100 1" = 10'-0"	1:100 1" = 10'-0"
1:100 1" = 10'-0"	1:100 1" = 10'-0"	1:100 1" = 10'-0"	1:100 1" = 10'-0"
1:100 1" = 10'-0"	1:100 1" = 10'-0"	1:100 1" = 10'-0"	1:100 1" = 10'-0"
1:100 1" = 10'-0"	1:100 1" = 10'-0"	1:100 1" = 10'-0"	1:100 1" = 10'-0"
1:100 1" = 10'-0"	1:100 1" = 10'-0"	1:100 1" = 10'-0"	1:100 1" = 10'-0"

1:100 1" = 10'-0"	1:100 1" = 10'-0"	1:100 1" = 10'-0"	1:100 1" = 10'-0"
1:100 1" = 10'-0"	1:100 1" = 10'-0"	1:100 1" = 10'-0"	1:100 1" = 10'-0"
1:100 1" = 10'-0"	1:100 1" = 10'-0"	1:100 1" = 10'-0"	1:100 1" = 10'-0"
1:100 1" = 10'-0"	1:100 1" = 10'-0"	1:100 1" = 10'-0"	1:100 1" = 10'-0"
1:100 1" = 10'-0"	1:100 1" = 10'-0"	1:100 1" = 10'-0"	1:100 1" = 10'-0"

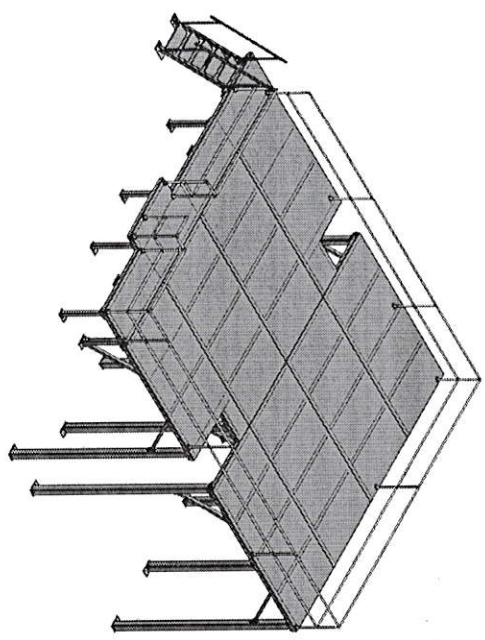
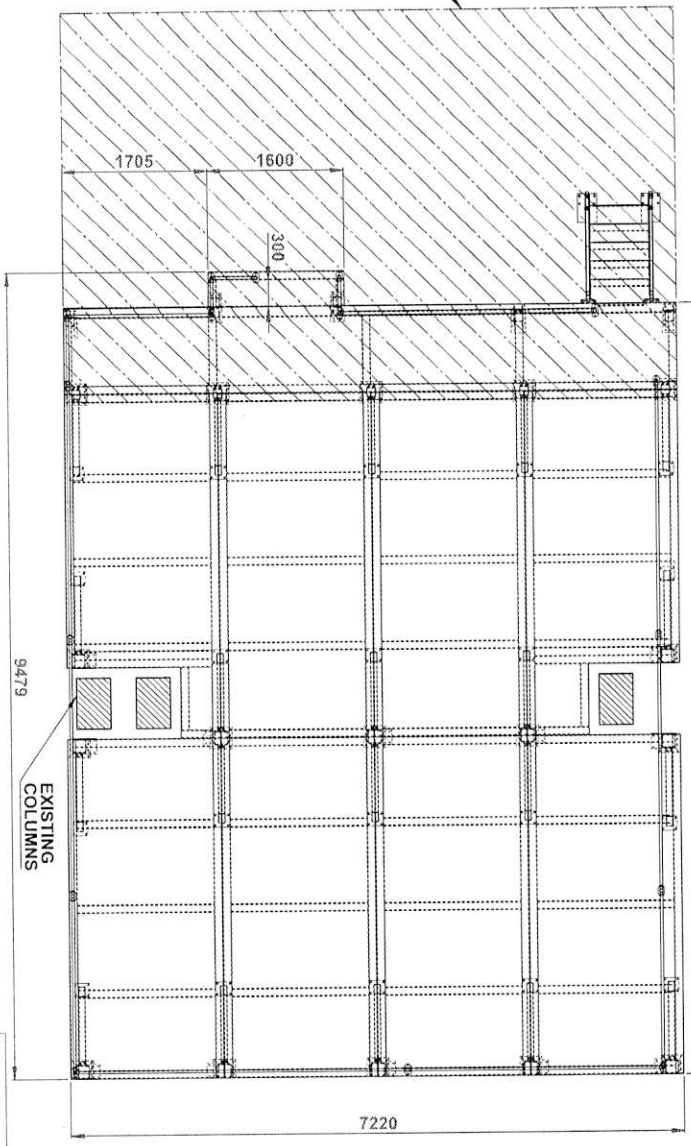


SEE DRAWING 02A14656 FOR OPERATORS PLATFORM DETAILS

029A14615  
STILLAGE & FOUNDATION  
DETAILS (4 LEGS)



029A14615  
STILLAGE & FOUNDATION  
DETAILS (4 LEGS)



NO.	DESCRIPTION	QTY	UNIT	REMARKS
1	100x100x4 SHS			
2	80x80x5 SHS			
3	150x150x8 SHS			
4	10mm DECK PLATE			
5	EXISTING COLUMNS			

PRODUCT USE

029A14615